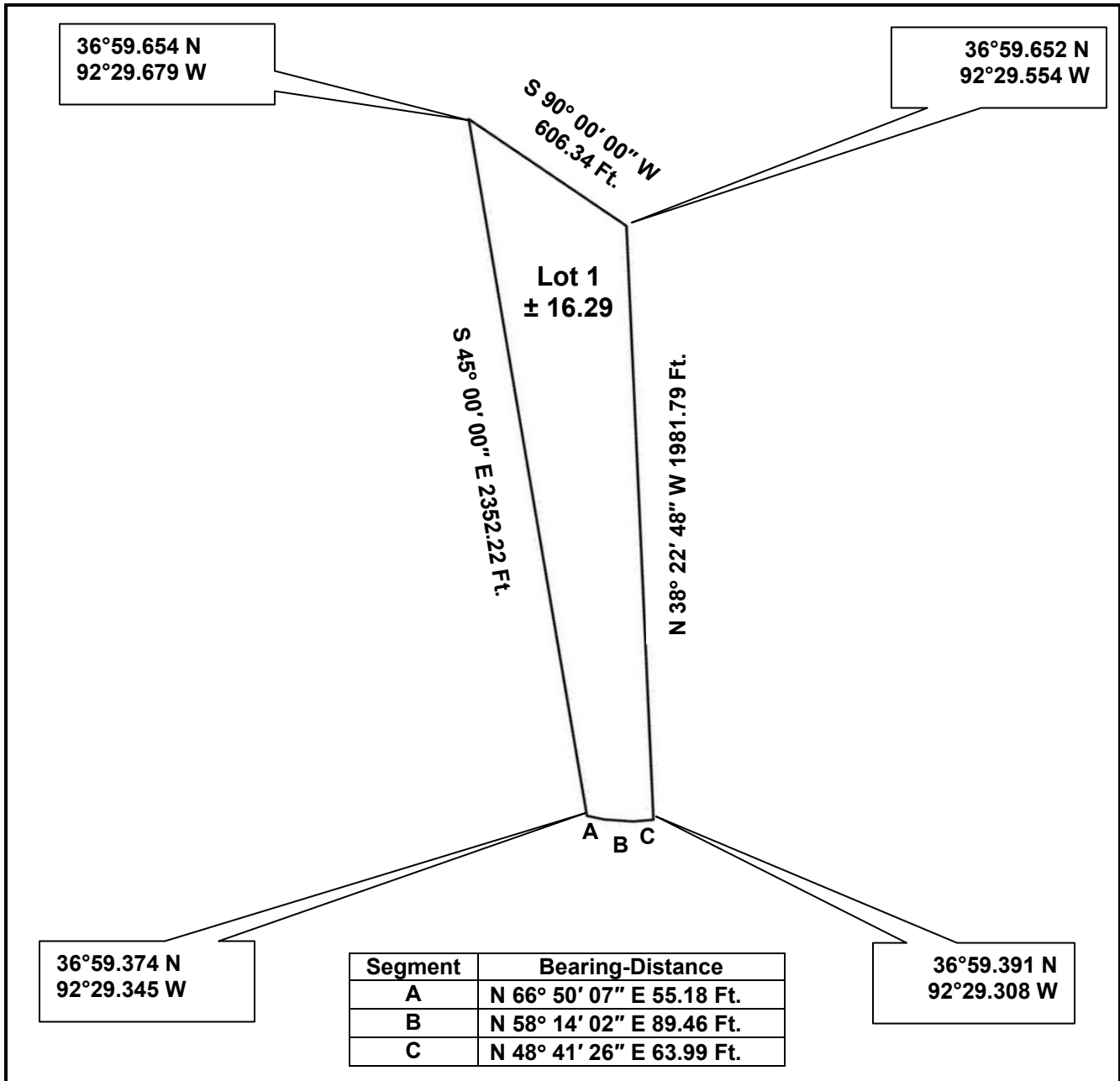


# LOT PLAN



Being a tract of land out of a ±48.88 acre tract of land lying in the Northeast Quarter (NE/4) of Section 32, the Southeast Quarter (SE/4) of Section 29, the Southwest Quarter (SW/4) of Section 28, and the Northwest Quarter (NW/4) of Section 33, all lying in Township 27 North, Range 14 West, Douglas County, Missouri.

GPS Coordinates presented here are in the Universal Transverse Mercator (UTM) Zone 15 N coordinate system using the North America Datum for 1983 (NAD83).

**Note** that these coordinates are based upon the best data we have accumulated, **but are not exact**. This information is for the purpose of locating your property only. Prior to building a fence or any structures on your land, you should contact a state licensed surveyor to mark the exact corners of your property.