

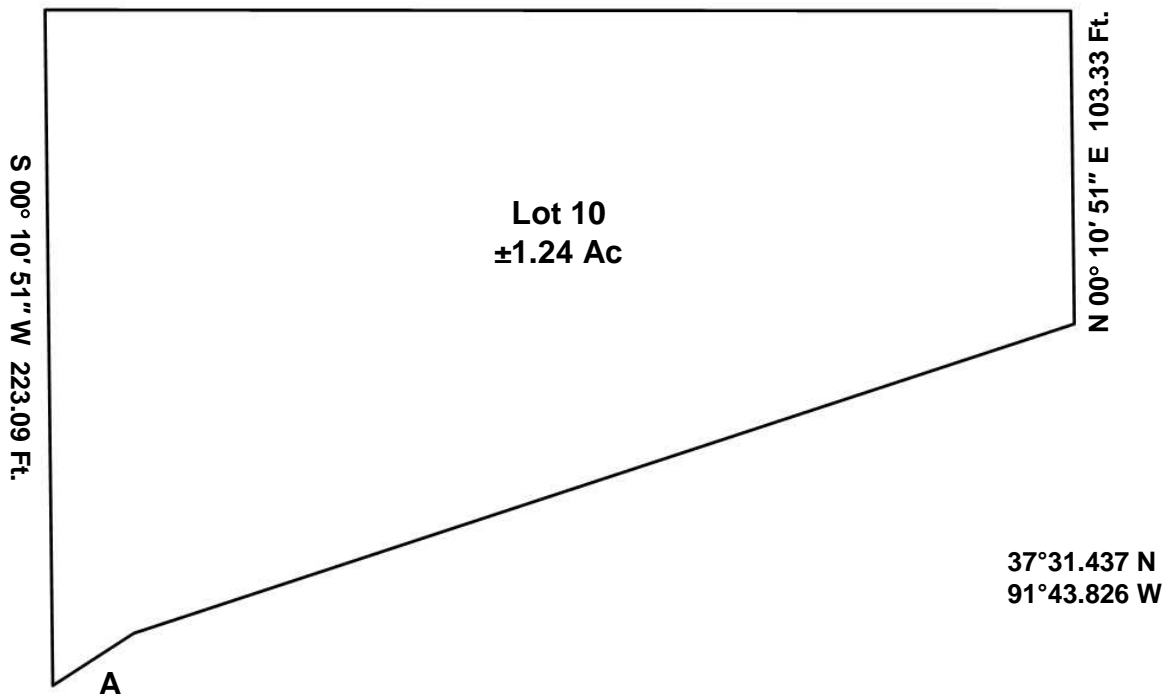
N 72° 36' 22" E 326.99 Ft

## LOT PLAN

37°31.455 N  
91°43.896 W

37°31.454 N  
91°43.826 W

N 89° 04' 43" W 338.74 Ft.



37°31.418 N  
91°43.896 W

A = N 57° 54' 36" E 31.83 Ft.

Being a ±1.24 acre tract of land out of the Northwest Quarter (NW/4) and the Northeast Quarter (NE/4) of the Southwest Quarter (SW/4) of Section 32, Township 33 North, Range 7 West, Dent County, Missouri.

GPS Coordinates presented here are in the Universal Transverse Mercator (UTM) Zone 15 N coordinate system using the North America Datum for 1983 (NAD83).

**Note** that these coordinates are based upon the best data we have accumulated, **but are not exact**. This information is for the purpose of locating your property only. Prior to building a fence or any structures on your land, you should contact a state licensed surveyor to mark the exact corners of your property.