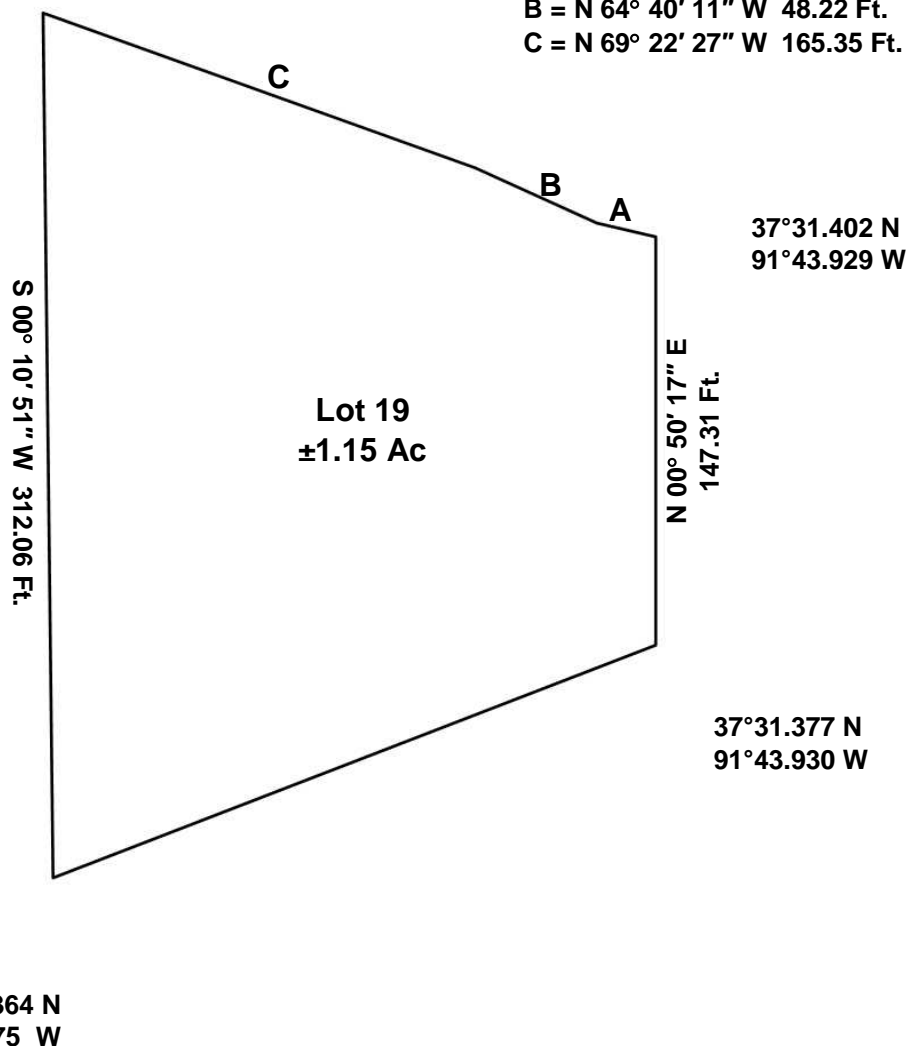


N 69° 39' 11" E 232.77 Ft

## LOT PLAN

37°31.415 N  
91°43.975 W

A = N 75° 59' 53" W 21.74 Ft  
B = N 64° 40' 11" W 48.22 Ft.  
C = N 69° 22' 27" W 165.35 Ft.



Being a ±1.15 acre tract of land out of the Northwest Quarter (NW/4) and the Northeast Quarter (NE/4) of the Southwest Quarter (SW/4) of Section 32, Township 33 North, Range 7 West, Dent County, Missouri.

GPS Coordinates presented here are in the Universal Transverse Mercator (UTM) Zone 15 N coordinate system using the North America Datum for 1983 (NAD83).

**Note** that these coordinates are based upon the best data we have accumulated, **but are not exact**. This information is for the purpose of locating your property only. Prior to building a fence or any structures on your land, you should contact a state licensed surveyor to mark the exact corners of your property.