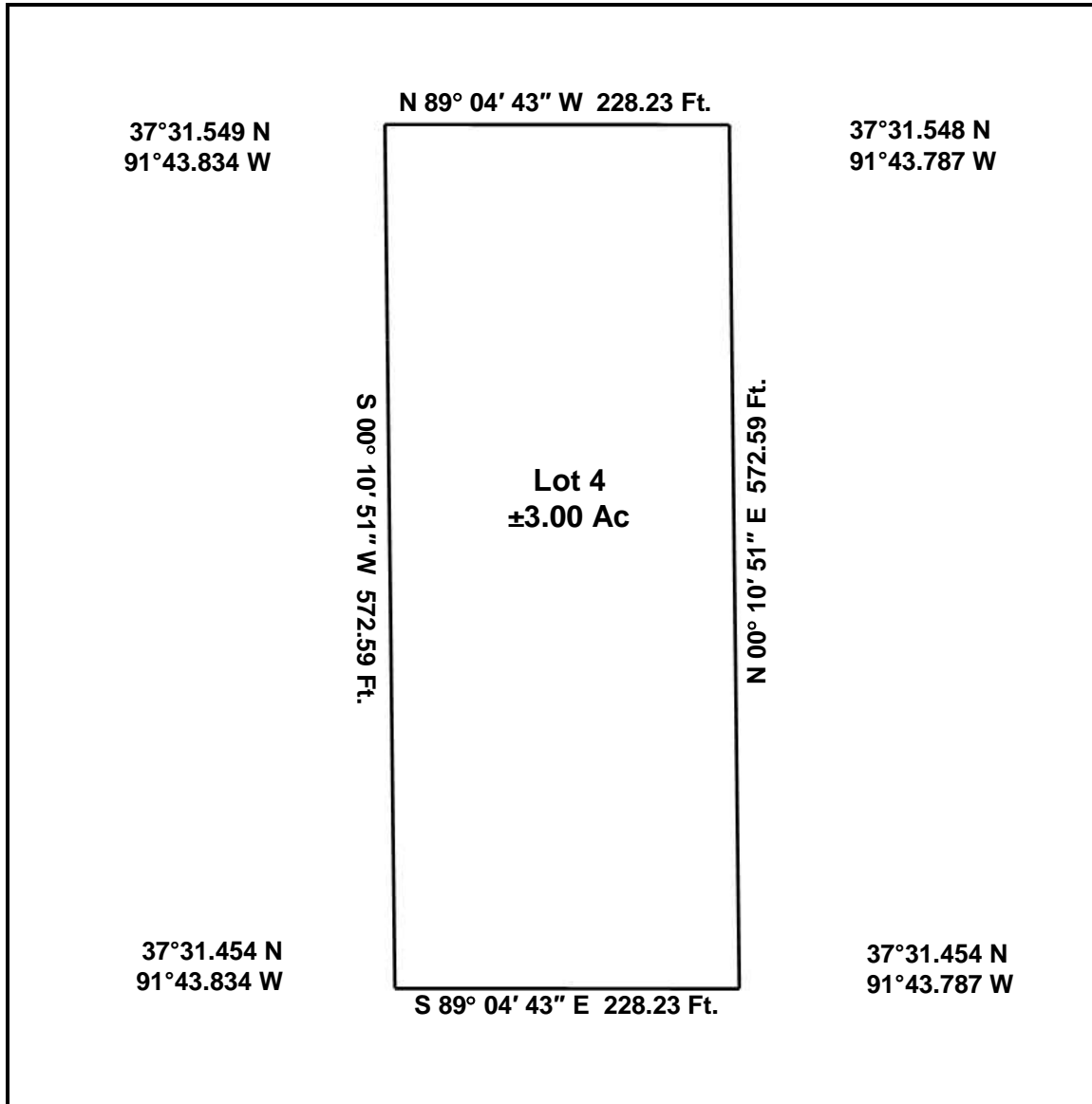


LOT PLAN



Being a ±3.00 acre tract of land out of the Northwest Quarter (NW/4) and the Northeast Quarter (NE/4) of the Southwest Quarter (SW/4) of Section 32, Township 33 North, Range 7 West, Dent County, Missouri.

GPS Coordinates presented here are in the Universal Transverse Mercator (UTM) Zone 15 N coordinate system using the North America Datum for 1983 (NAD83).

Note that these coordinates are based upon the best data we have accumulated, **but are not exact**. This information is for the purpose of locating your property only. Prior to building a fence or any structures on your land, you should contact a state licensed surveyor to mark the exact corners of your property.