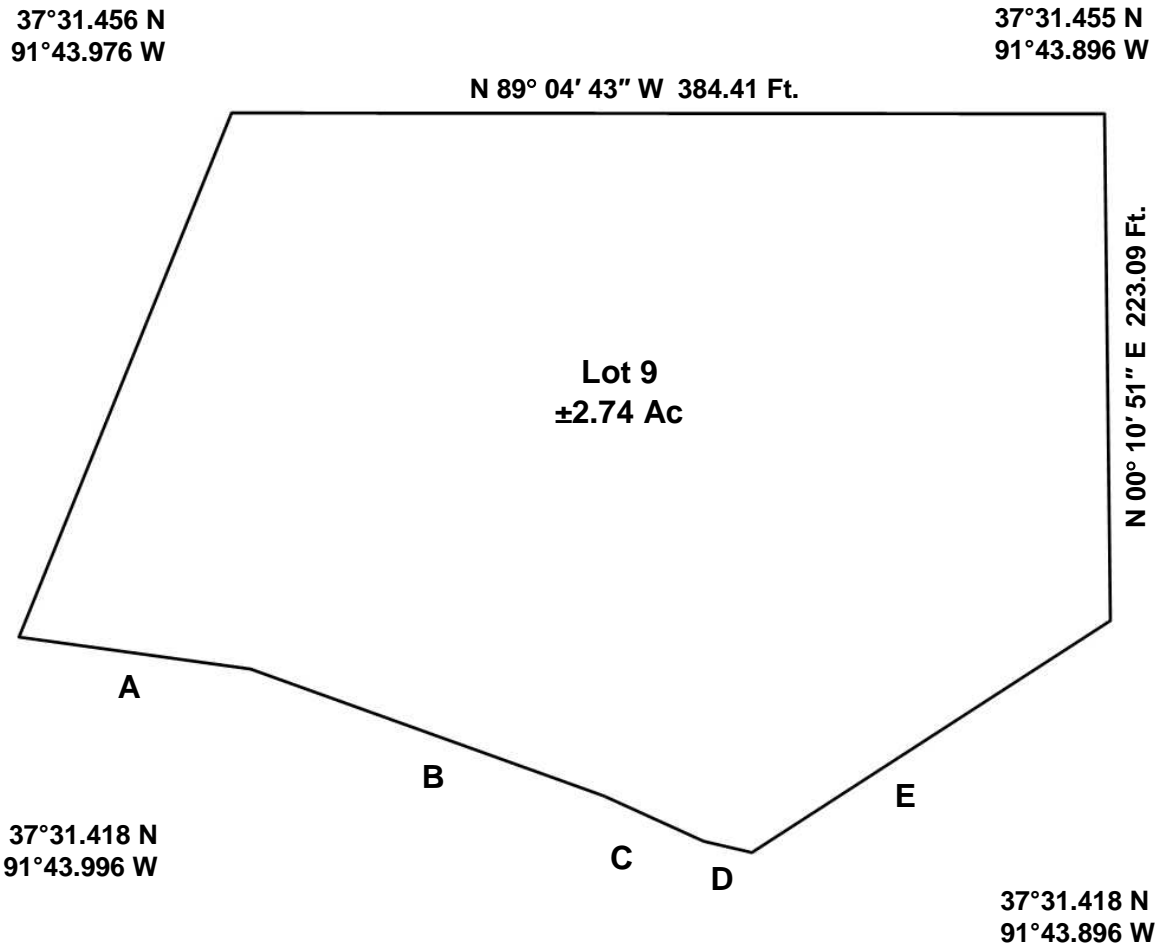


S 22° 53' 10" W 248.97 Ft

LOT PLAN



- A = S 81° 17' 23" E 102.99 Ft.
- B = S 69° 22' 27" E 165.35 Ft.
- C = S 64° 40' 11" E 48.22 Ft.
- D = S 75° 59' 53" E 21.74 Ft.
- E = N 57° 54' 35" E 188.00 Ft.

Being a ±2.74 acre tract of land out of the Northwest Quarter (NW/4) and the Northeast Quarter (NE/4) of the Southwest Quarter (SW/4) of Section 32, Township 33 North, Range 7 West, Dent County, Missouri.

GPS Coordinates presented here are in the Universal Transverse Mercator (UTM) Zone 15 N coordinate system using the North America Datum for 1983 (NAD83).

Note that these coordinates are based upon the best data we have accumulated, **but are not exact**. This information is for the purpose of locating your property only. Prior to building a fence or any structures on your land, you should contact a state licensed surveyor to mark the exact corners of your property.