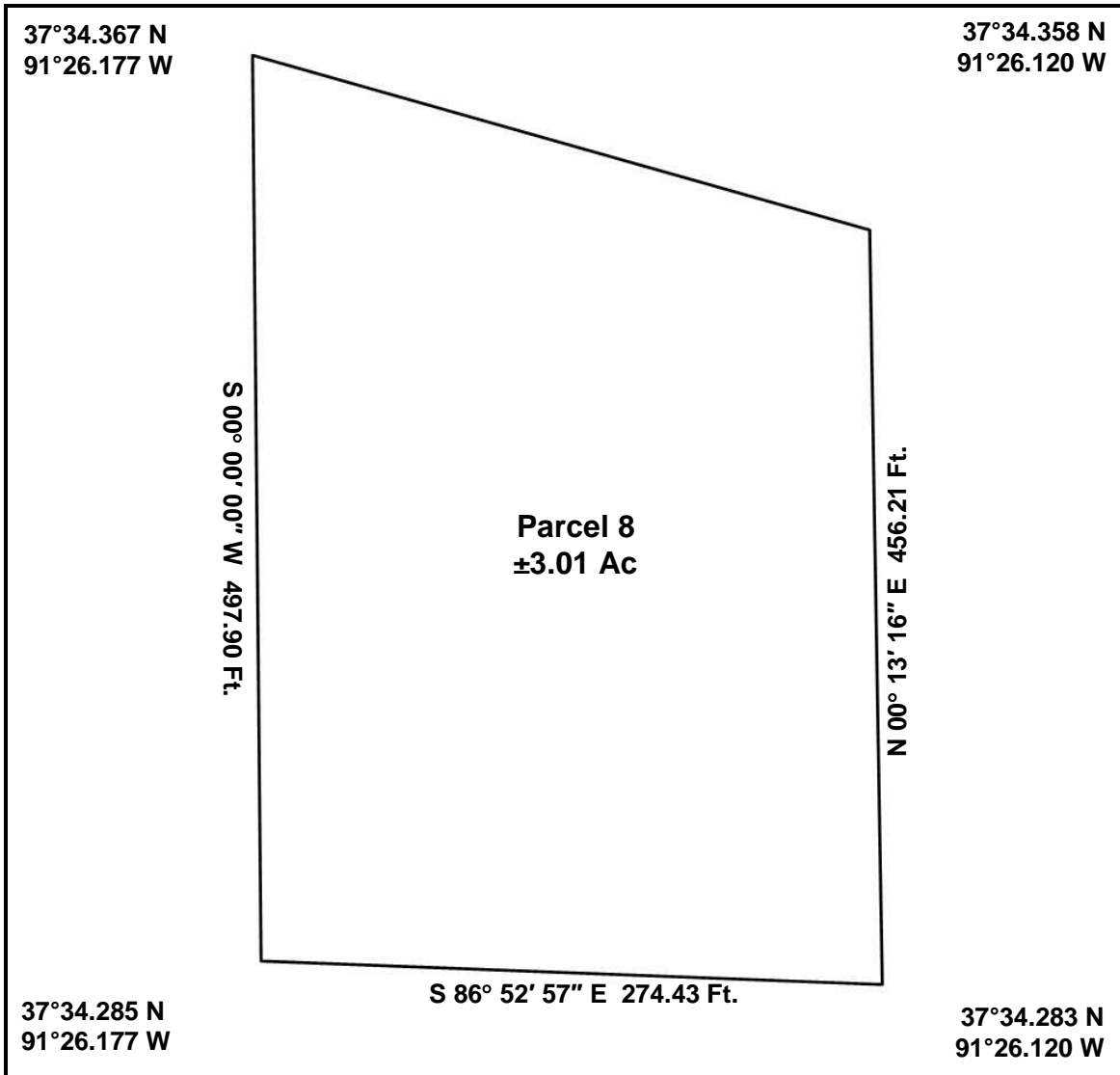


N 78° 22' 42" W 281.53 Ft.

## LOT PLAN



Being a ± 3.01 acre part of the South Half of the Northwest Quarter of the Section 12, Township 33 North, Range 5 West of the 5<sup>th</sup> P.M., Dent County, Missouri.

GPS Coordinates presented here are in the Universal Transverse Mercator (UTM) Zone 15 N coordinate system using the North America Datum for 1983 (NAD83).

**Note** that these coordinates are based upon the best data we have accumulated, **but are not exact**. This information is for the purpose of locating your property only. Prior to building a fence or any structures on your land, you should contact a state licensed surveyor to mark the exact corners of your property.