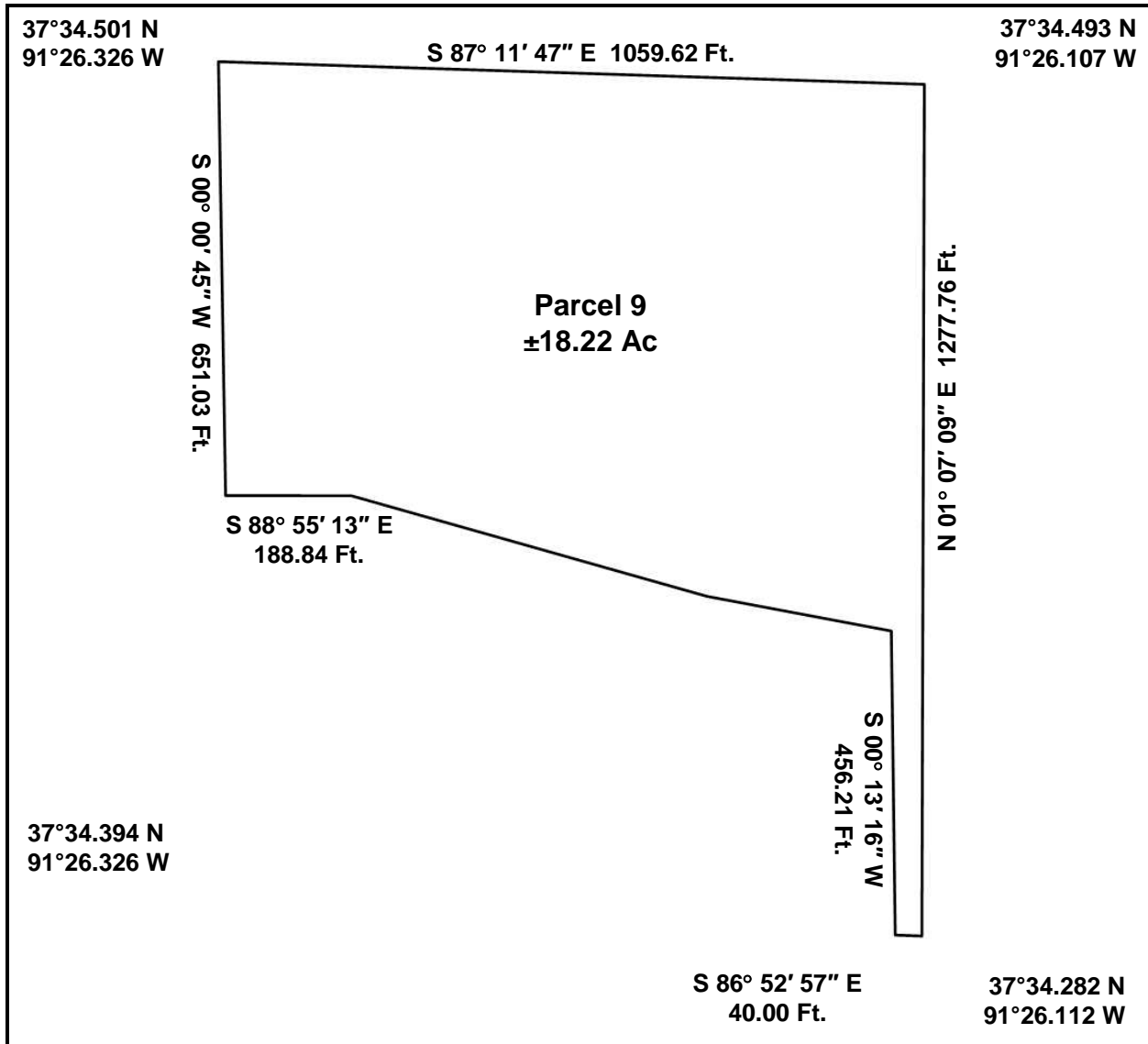


S 73° 12' 26" E 554.25 Ft.
281.53 Ft.

LOT PLAN



Being a ± 18.22 acre part of the South Half of the Northwest Quarter of the Section 12, Township 33 North, Range 5 West of the 5th P.M., Dent County, Missouri.

GPS Coordinates presented here are in the Universal Transverse Mercator (UTM) Zone 15 N coordinate system using the North America Datum for 1983 (NAD83).

Note that these coordinates are based upon the best data we have accumulated, **but are not exact**. This information is for the purpose of locating your property only. Prior to building a fence or any structures on your land, you should contact a state licensed surveyor to mark the exact corners of your property.