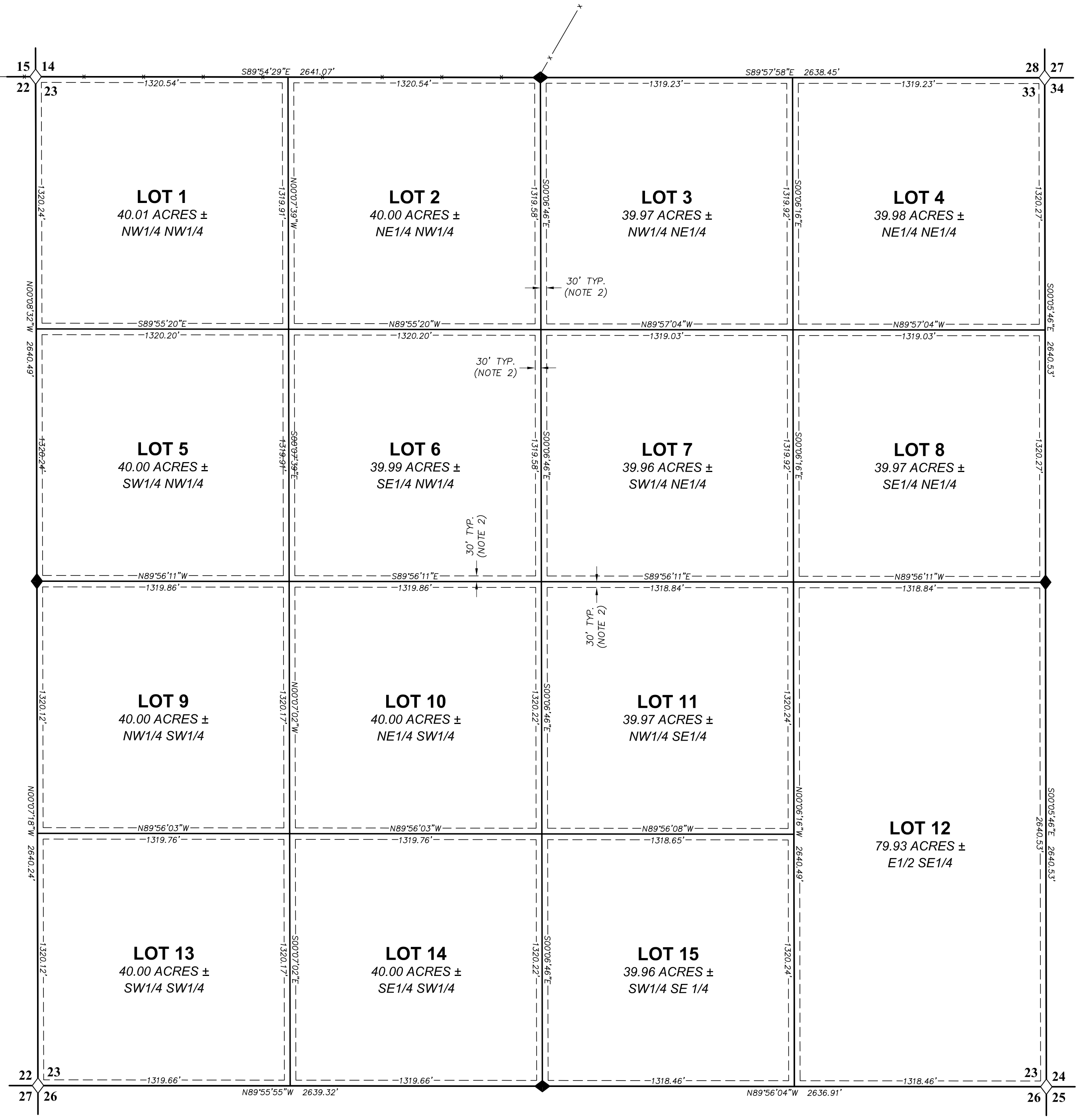
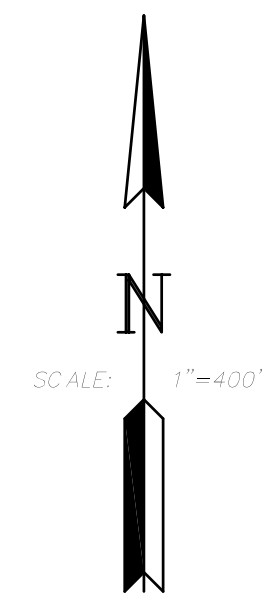


SECTION 23, T.37N., R.33E., M.D.B.&M.
HUMBOLDT COUNTY, NEVADA



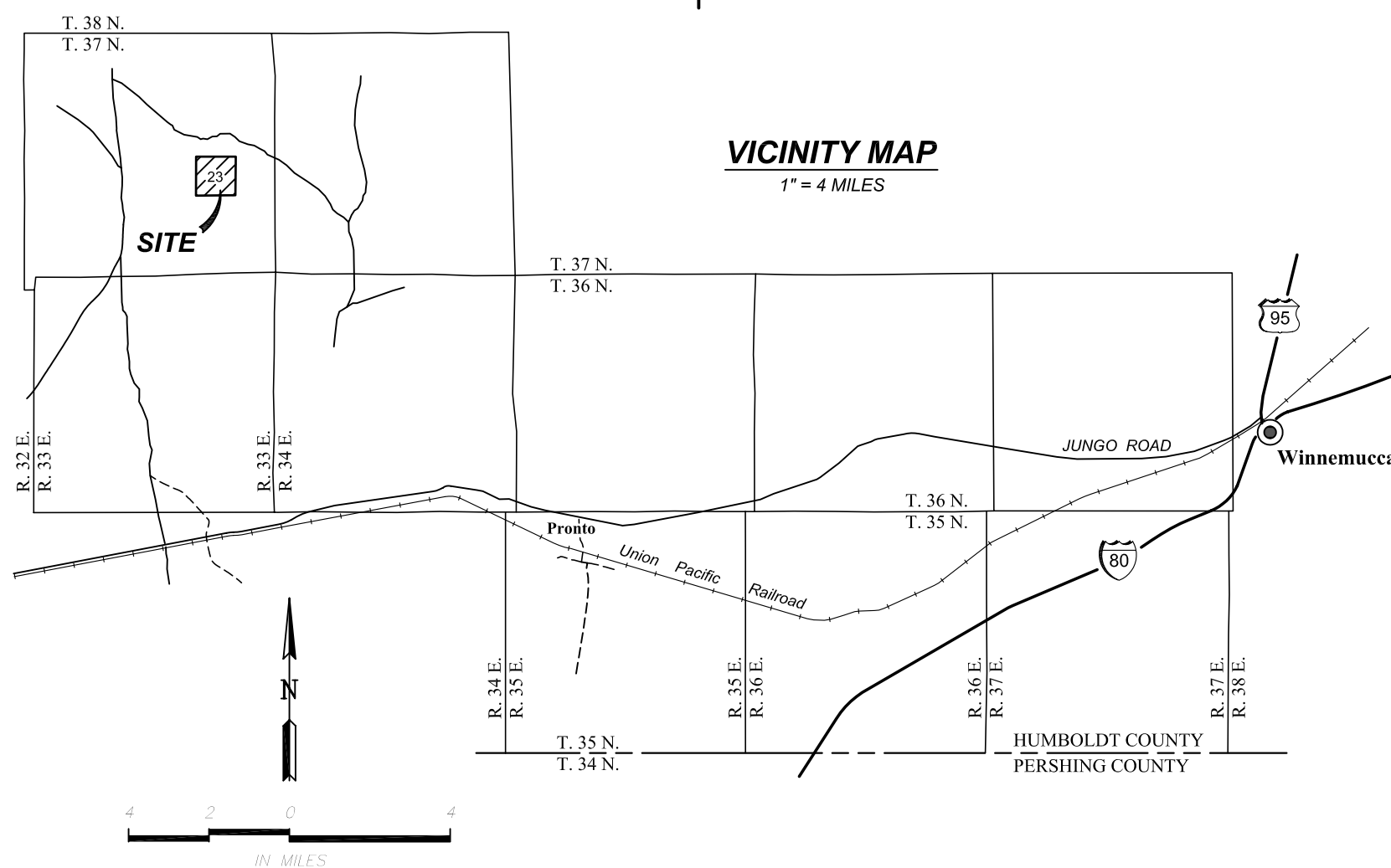
SURVEYOR'S CERTIFICATE
I, JOHN H. MILTON III, a PROFESSIONAL LAND SURVEYOR, licensed in the State of Nevada, do hereby certify that:
1. This tentative plat is a true and accurate representation of the lands shown hereon, which lie within Section 23, T.37N., R.33E., M.D.B.&M., in Humboldt County, Nevada, prepared at the instance of SCOTT H. WIGGINTON.
2. This plat was prepared during June, 2007.
3. This plat complies with all applicable statutes of this state and any local ordinances.

JOHN H. MILTON III
Professional Land Surveyor
Nevada 5271

OWNER:
SCOTT H. WIGGINTON
1255 W. 15TH STREET
PLANO, TX 75075-7248

NOTES

- Public utility easements are hereby granted 10.0 feet in width coincident with all dedicated street rights-of-ways, 5 feet in width coincident with all other exterior boundaries, and 10 feet in width centered on all interior lot lines. A public utility easement is also hereby granted within each parcel for the exclusive purpose of installing and maintaining utility service facilities to that parcel and the right to exit that parcel with said utility facilities for the purpose of serving adjacent parcels at locations mutually agreed upon by the owner of record at that time, and the utility company, consistent with standard utility practice.
- 30' wide easements along the interior of each lot line as indicated are to be granted for vehicle access, utility purposes, and future development.
- Total Area Surveyed: 639.74 Acres±, including roadways/easements.
- Current zoning is: M-3
- A.P.N.O.: 005-261-08
- These parcels are subject to certain surface use rights of the Lessee under those certain Minerals Leases recorded in the official records of Humboldt County on November 25, 1987, in Book 245 at Page 455 and November 17, 1997 as document number 1997-9886 for the duration of said leases.

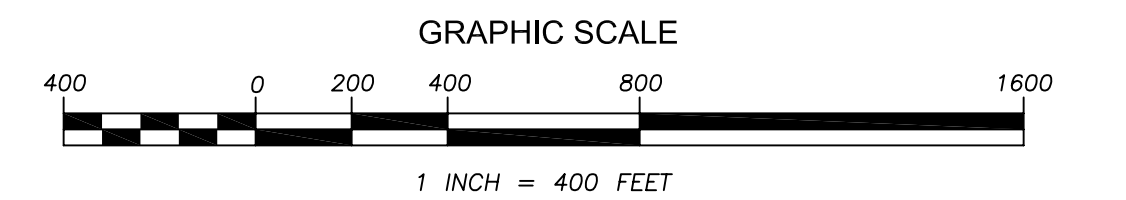


BASIS OF BEARINGS

North American Datum of 1983 (NAD83), Nevada, West Zone; The line between the NW corner and the W1/4 corner of Section 33, T.37N., R.33E., M.D.B.&M., as established by GPS observation, was assumed to be: S00°00'00"E

LEGEND

- ◊ Indicates a section corner
- ◆ Indicates a 1/4 section corner



~ Tentative Map Of ~
DIVISION INTO LARGE PARCELS
~ Prepared For ~
SCOTT H. WIGGINTON
LYING WITHIN SECTION 23, T.37N., R.33E., M.D.B.&M.
HUMBOLDT COUNTY NEVADA

DESERT MOUNTAIN SURVEYING
GPS • Land • Water Rights • Boundary
146 West Second Street, Winnemucca, NV 89445
Telephone 775-623-4414 • FAX 775-623-5821 • E-MAIL dms@winnemucca.net