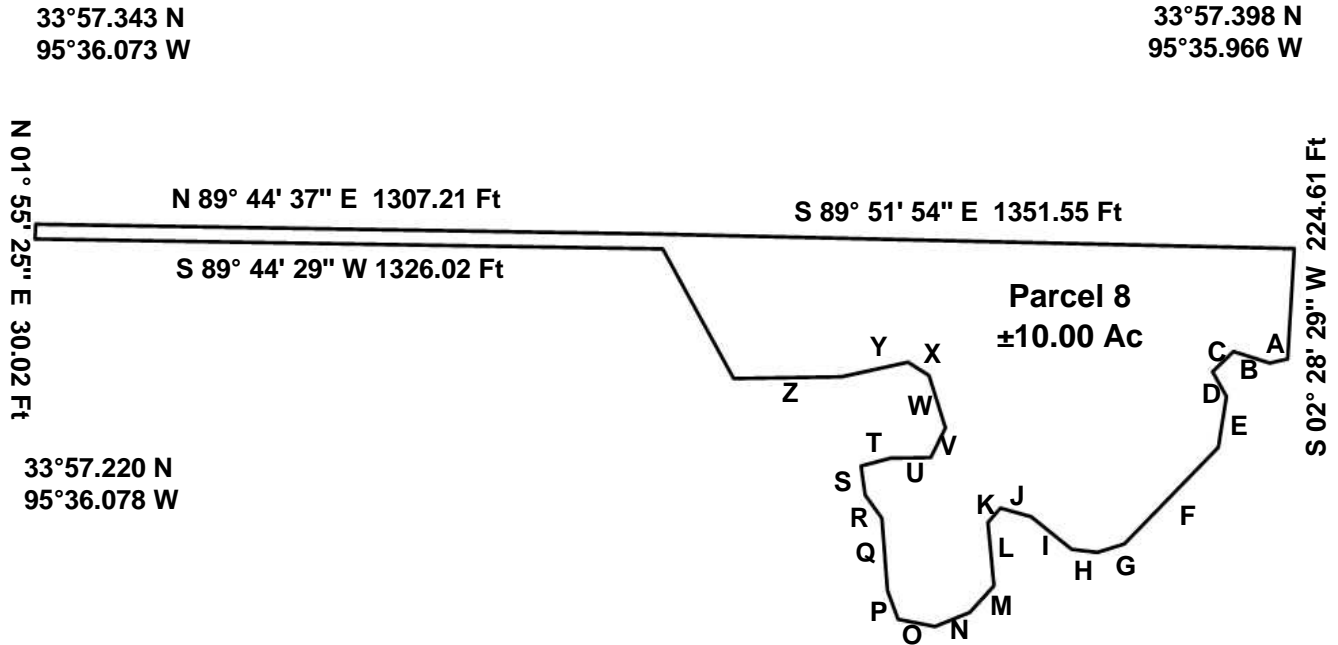


N 30° 41' 12" W
303.26 Ft

LOT PLAN



Line	Direction - Distance
A	S 76° 01' 40" W 38.75 Ft
B	N 73° 59' 09" W 80.16 Ft
C	S 45° 47' 07" W 60.46 Ft
D	S 31° 31' 45" E 58.12 Ft
E	S 08° 22' 38" W 105.23 Ft
F	S 44° 08' 17" W 278.70 Ft
G	S 71° 54' 33" W 59.41 Ft
H	N 84° 37' 44" W 54.71 Ft
I	N 53° 21' 35" W 108.36 Ft
J	N 75° 50' 17" W 67.19 Ft
K	S 40° 47' 51" W 39.64 Ft
L	S 06° 46' 34" E 129.24 Ft
M	S 42° 10' 15" W 74.38 Ft

Line	Direction - Distance
N	S 67° 33' 27" W 79.10 Ft
O	N 80° 19' 07" W 79.23 Ft
P	N 22° 02' 00" W 62.18 Ft
Q	N 05° 42' 36" W 147.81 Ft
R	N 37° 55' 47" W 58.93 Ft
S	N 09° 37' 57" W 59.59 Ft
T	N 74° 29' 23" E 64.23 Ft
U	N 88° 02' 25" E 85.26 Ft
V	N 25° 51' 18" E 67.96 Ft
W	N 19° 07' 01" W 111.74 Ft
X	N 59° 38' 14" W 52.12 Ft
Y	S 76° 51' 16" W 142.72 Ft
Z	S 87° 56' 25" W 228.59 Ft

33°57.221 N
95°35.974 W

Being a tract of land out of the West Half of the Southwest Quarter and the Southeast Quarter of the Southwest Quarter of Section 11, Township 7 South, Range 16 East, Choctaw County, Oklahoma.

GPS Coordinates presented here are in the Universal Transverse Mercator (UTM) Zone 15 N coordinate system using the North America Datum for 1983 (NAD83).

Note that these coordinates are based upon the best data we have accumulated, **but are not exact**. This information is for the purpose of locating your property only. Prior to building a fence or any structures on your land, you should contact a State licensed surveyor to mark the exact corners of your property.