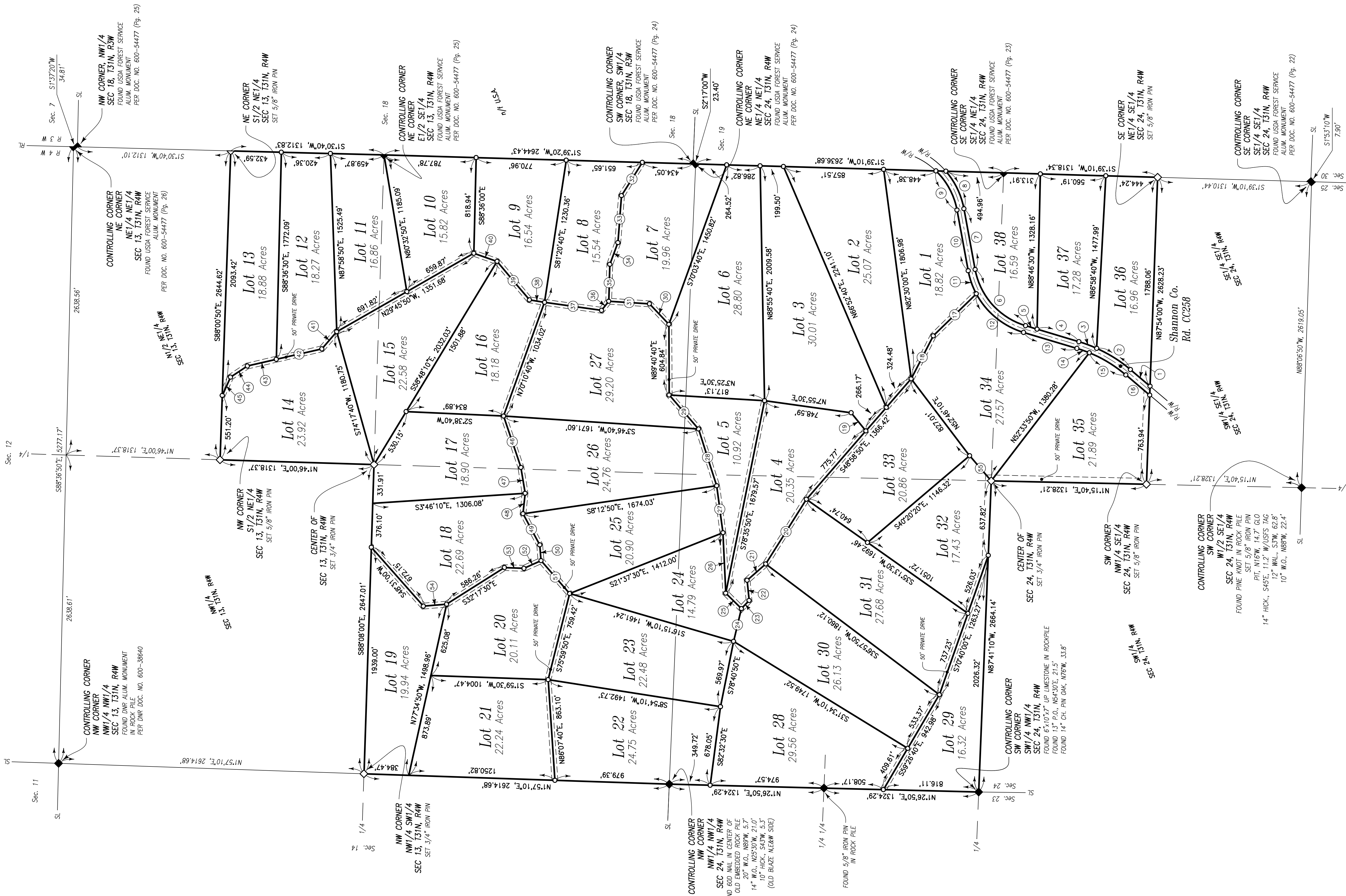


Plat of Antler Ridge

Being all of S1/2 Sec. 13, S1/2 NE1/4 Sec. 13, all of
N1/2 Sec. 24 & N1/2 SE 1/4 Sec. 24 all in T31N, R4W
Shannon County, Missouri



No.	Bearing/ Radius	Distance/ Arc	Chord
1	N40°11'10"E	220.13'	
2	1230.00'	341.84'	S32°13'30"W, 340.74'
3	1230.00'	162.53'	S20°28'40"W, 162.42'
4	N16°41'30"	374.03'	
5	N16°41'30"	102.68'	
6	620.00'	679.96'	N48°06'40"E, 646.39'
7	N79°31'40"E	528.23'	
8	680.00'	360.40'	S64°20'40"W, 356.20'
9	620.00'	386.09'	S61°41'20"W, 379.88'
10	S79°31'40"W	528.23'	
11	680.00'	208.68'	
12	680.00'	536.09'	N70°41'40"E, 208.85'
13	S16°41'30"W	476.71'	N39°16'40"E, 522.31'
14	1170.00'	112.64'	
15	S40°11'10"W	367.12'	
16	N44°20'20"W	287.15'	
17	N44°20'20"W	515.23'	
18	N62°46'30"W	413.29'	
19	N51°00'20"W	199.74'	
20	N57°51'00"W	653.55'	
21	N41°20'20"W	211.45'	
22	N84°37'23"W	173.63'	
23	N46°29'00"W	95.22'	
24	N76°28'00"W	288.34'	
25	N44°34'40"W	188.38'	
26	N87°23'40"W	517.29'	
27	N82°00'00"W	405.46'	
28	N72°15'10"W	510.32'	
29	N49°14'30"W	383.67'	
30	N46°31'50"W	240.85'	
31	N5°39'40"E	349.22'	
32	N57°55'50"W	334.80'	
33	N85°31'50"W	403.67'	
34	N69°38'20"W	198.15'	
35	N68°19'30"W	316.02'	
36	N51°19'50"W	98.97'	
37	N7°55'40"E	492.50'	
38	N8°34'00"E	131.31'	
39	N49°05'50"W	429.96'	
40	N19°15'50"E	210.56'	
41	N49°08'00"W	194.24'	
42	N12°55'25"W	399.97'	
43	N13°01'40"W	253.79'	
44	N32°25'50"W	172.71'	
45	N65°41'20"W	171.71'	
46	S71°19'50"W	463.85'	
47	S80°55'50"W	224.24'	
48	N84°22'40"W	175.28'	
49	S61°41'10"W	302.81'	
50	S65°23'10"W	135.25'	
51	S49°08'40"W	349.57'	
52	N24°11'40"W	160.39'	
53	N2°13'20"E	167.14'	
54	N4°42'50"W	198.89'	
55	N49°14'30"E	283.79'	

Sheet 1 of 2

land surveyors • civil engineers
310 East 6th Street, Rolla, Missouri 65401 • Phone: 573-364-6362 • Fax: 573-364-4782 • www.elginsurvey.com

REVISIONS		Plat of Antler Ridge Shannon County, Missouri	
		Classic Country Shannon County, Missouri	
		DRAWN BY: MEP	SCALE: 1"=400'
		DATE: May 17, 2010	SURVEY NO.: K756F

