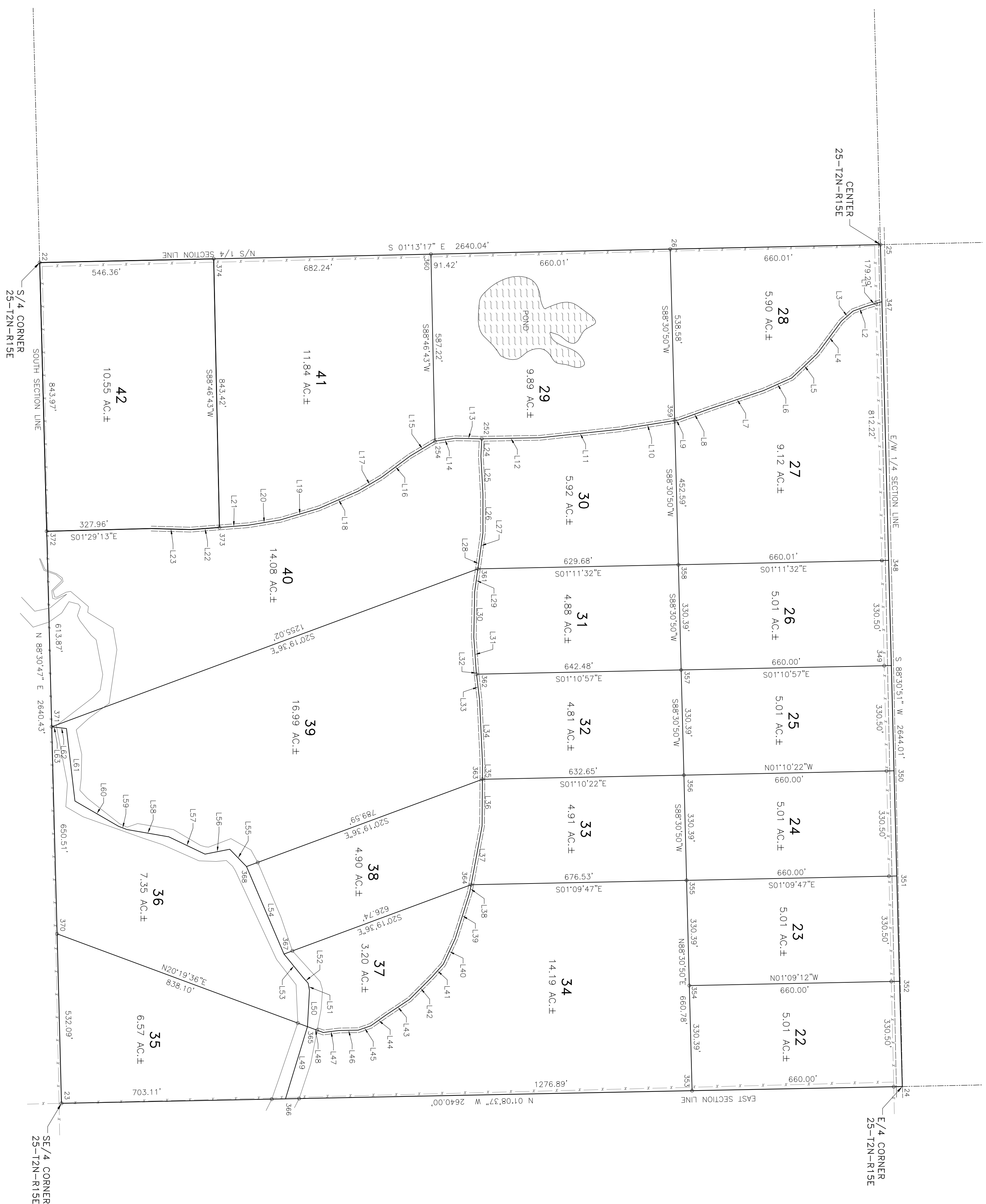


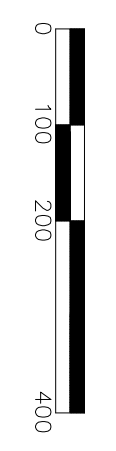
# DAISY MEADOWS II



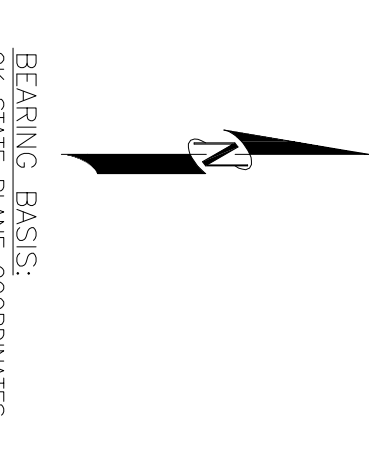
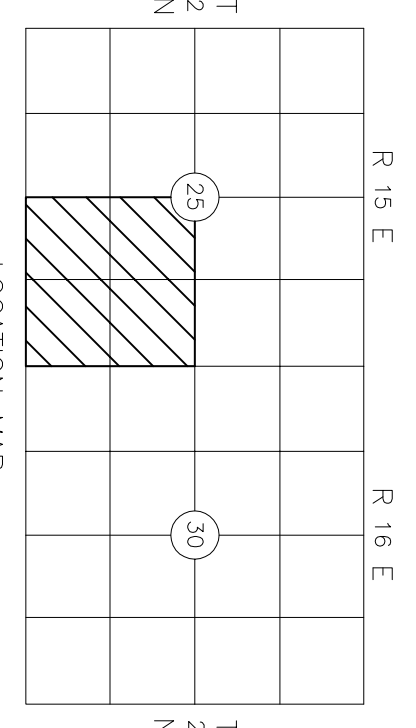
Line #	Length	Direction	Line #	Length	Direction	Line #	Length	Direction
L1	50.45'	S161°42'29"E	L22	90.36'	S04°22'58"E	L43	88.18'	S33°38'20"E
L2	44.78'	S19°57'44"E	L23	124.41'	S01°31'31"W	L44	59.44'	S35°19'49"E
L3	48.64'	S41°02'51"E	L24	59.56'	S87°15'32"E	L45	41.81'	S19°02'02"E
L4	127.14'	S53°27'23"E	L25	118.71'	N86°58'39"E	L46	60.24'	S00°52'29"E
L5	110.25'	S43°32'08"E	L26	121.77'	N89°57'00"E	L47	49.75'	S07°16'02"E
L6	97.70'	S24°05'19"E	L27	80.15'	S82°02'06"E	L48	53.06'	S20°19'36"W
L7	174.51'	S18°39'16"E	L28	33.49'	S81°54'41"E	L49	237.04'	N73°02'44"W
L8	107.93'	S19°38'24"E	L29	73.15'	S81°54'41"E	L50	114.02'	N86°50'31"W
L9	11.67'	S09°03'57"E	L30	141.74'	S88°55'10"E	L51	23.18'	S79°45'15"W
L10	173.15'	S09°03'57"E	L31	109.92'	N85°50'46"E	L52	21.47'	S47°45'19"W
L11	283.20'	S06°02'14"E	L32	6.71'	N83°22'29"E	L53	97.21'	S50°46'56"W
L12	182.95'	S01°01'34"E	L33	81.81'	N83°22'29"E	L54	298.54'	S66°50'40"W
L13	83.15'	S01°07'10"W	L34	197.46'	N87°17'55"E	L55	75.90'	S45°49'04"W
L14	64.53'	S08°09'07"E	L35	51.47'	S89°36'13"E	L56	79.13'	S11°10'05"E
L15	91.63'	S30°51'43"E	L36	146.57'	S89°36'13"E	L57	126.01'	S25°33'26"W
L16	112.01'	S36°45'02"E	L37	187.65'	S79°28'17"E	L58	133.66'	S09°54'25"W
L17	84.92'	S30°35'21"E	L38	25.97'	S79°28'17"E	L59	27.68'	S21°33'15"W
L18	133.19'	S23°39'02"E	L39	150.86'	S72°36'02"E	L60	158.32'	S30°00'18"W
L19	127.50'	S16°40'27"E	L40	88.62'	S65°03'18"E	L61	229.03'	S83°19'22"W
L20	102.22'	S09°18'06"E	L41	55.02'	S47°56'31"E	L62	30.98'	S07°07'31"W
L21	90.36'	S04°22'58"E	L42	97.85'	S45°03'02"E	L63	15.67'	S07°07'31"W

POINT	NORTHING	EASTING
22	47202.056	2666313.48
23	472089.09	2668953.01
24	474728.57	2668900.34
25	474659.99	2666257.22
26	474000.15	2666271.27
252	473408.43	2666866.85
254	473261.41	2666874.38
347	474664.66	2666436.43
348	474663.72	2667478.76
349	474663.72	2667209.15
350	474702.56	2668239.55
351	474711.43	2668569.94
352	474720.00	2668589.13
353	474708.70	2668583.22
354	474080.13	2668552.94
355	474051.36	2667922.66
356	474034.30	2667592.39
357	474034.43	2667262.11
358	474034.86	2666999.66
359	474034.82	2666728.43
360	473396.32	2667275.71
361	473392.09	2667605.65
362	473410.48	2667935.61
363	473375.17	2668266.68
364	473375.17	2668712.25
365	472861.19	2668938.99
366	472792.07	2668484.39
367	472787.46	2668209.89
368	472670.06	2668421.11
370	472058.41	2667740.83
371	472058.41	2667445.06
372	472564.78	26687145.06
374	472566.81	2668307.83

LEGEND  
 ○ SET 1/2" IP W/CAP



NOTE: THIS SURVEY WAS PERFORMED FOR THE BENEFIT OF A TITLE COMMENT AND MAY CONTAIN NOT SHOWN



**CERTIFICATE OF SURVEY**

I hereby certify that on AUGUST 7, 2013, that a survey was made under my supervision of the property described above and that the above plat is a true and correct representation of said survey, and also certify that this plat meets the Oklahoma Minimum Standards for the practice of Land Surveying as adopted by the Oklahoma State Board of Registration for Professional Engineers and Land Surveyors.

TD, Chappell, Oklahoma Licensed Professional Land Surveyor No. 18373

**CHAPPELL LAND SURVEYING, PC**  
 1702 West 22nd Street  
 Oklahoma City, Oklahoma 73102-7296  
 Phone: 361-2014

SURV. BY: TD

DRAWN BY: JA

APPROVED BY: TD

DATE: 8/7/13

SURVEY #: 5021-13

SHEET 1 OF 1