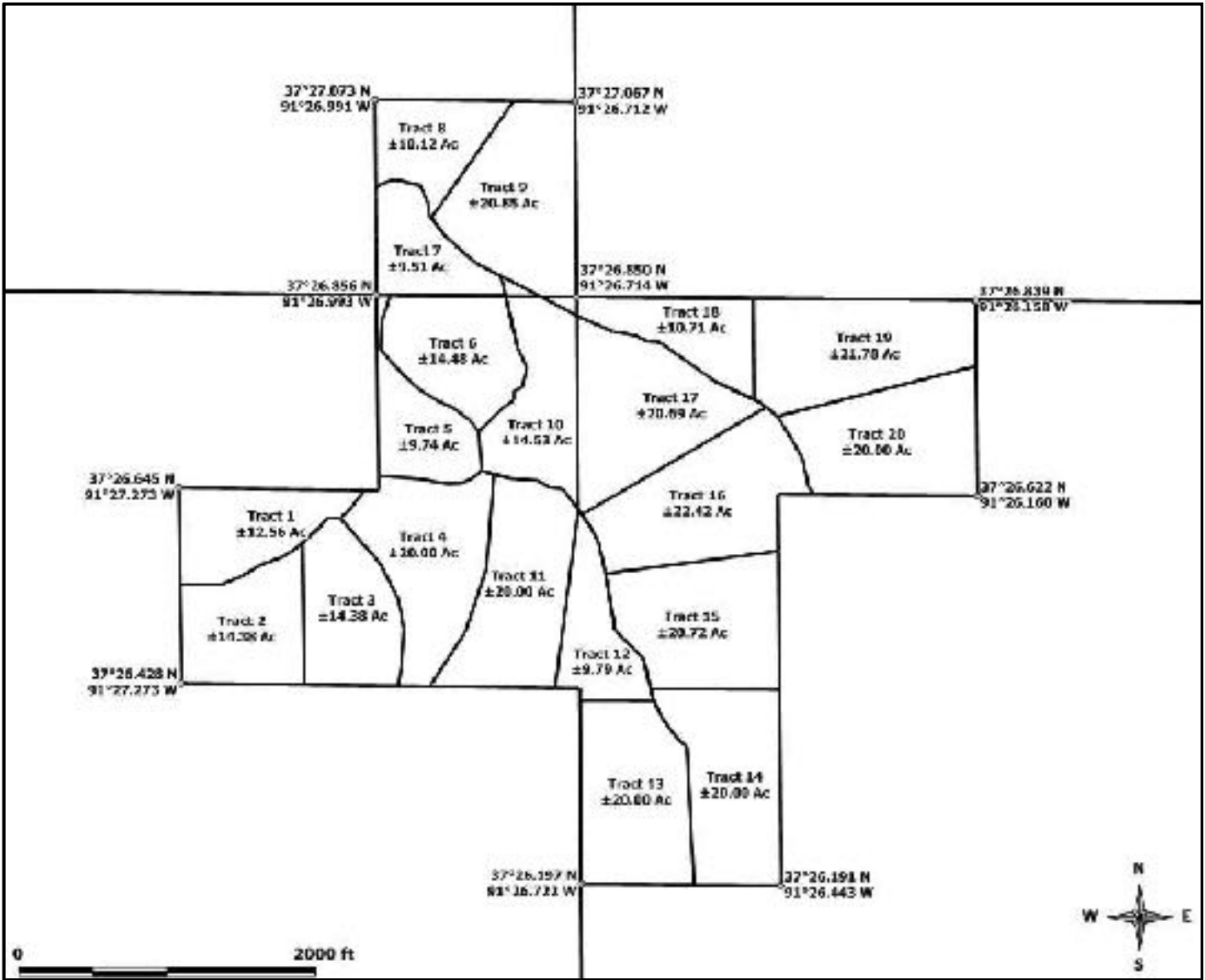


**SE/4 SE/4 of Section 23; NW/4 SW/4 and SW/4 NW/4 and N/2 NW/4 of Section 25;
NE/4 NE/4 and S/2 NE/4 of Section 26, all lying in
Township 32 North, Range 5 West
Dent County, Missouri
GPS Corners**



GPS Coordinates presented here are in the Universal Transverse Mercator (UTM) Zone 15 N coordinate system using the North America Datum for 1983 (NAD83).

Note that these coordinates are based upon the best data we have accumulated, but are not exact. This information is for the purpose of locating your property only. Prior to building a fence or any structures on your land, you should contact a state licensed surveyor to mark the exact corners of your property.