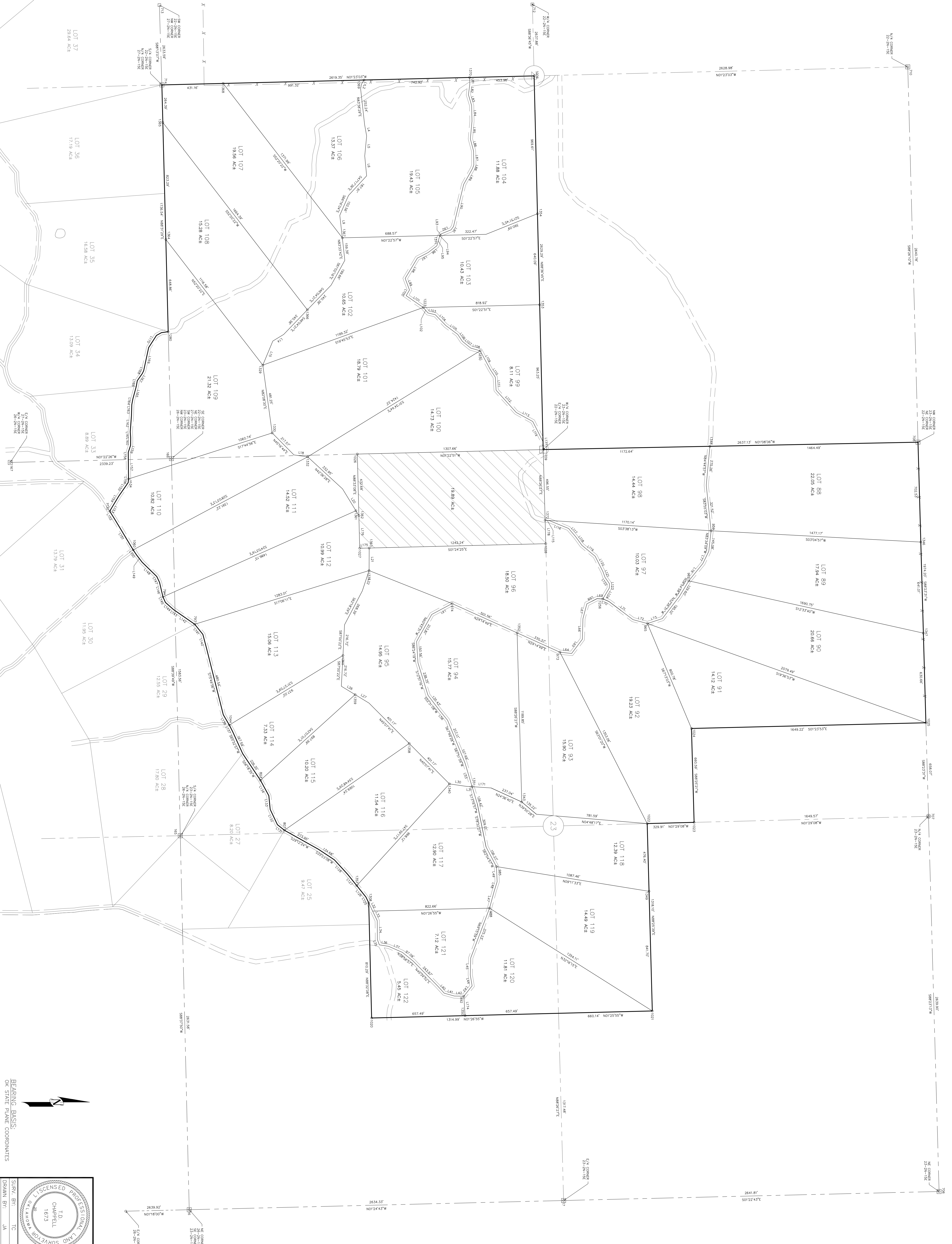


INDIAN RIDGE PHASE III



<p>Point # Bearing Distance</p> <p>16 472320.70 326524.16</p> <p>17 472320.70 326524.16</p> <p>18 472320.70 326524.16</p> <p>19 472320.70 326524.16</p> <p>20 472320.70 326524.16</p> <p>21 472320.70 326524.16</p> <p>22 472320.70 326524.16</p> <p>23 472320.70 326524.16</p> <p>24 472320.70 326524.16</p> <p>25 472320.70 326524.16</p> <p>26 472320.70 326524.16</p> <p>27 472320.70 326524.16</p> <p>28 472320.70 326524.16</p> <p>29 472320.70 326524.16</p> <p>30 472320.70 326524.16</p> <p>31 472320.70 326524.16</p> <p>32 472320.70 326524.16</p> <p>33 472320.70 326524.16</p> <p>34 472320.70 326524.16</p> <p>35 472320.70 326524.16</p> <p>36 472320.70 326524.16</p> <p>37 472320.70 326524.16</p> <p>38 472320.70 326524.16</p> <p>39 472320.70 326524.16</p> <p>40 472320.70 326524.16</p> <p>41 472320.70 326524.16</p> <p>42 472320.70 326524.16</p> <p>43 472320.70 326524.16</p> <p>44 472320.70 326524.16</p> <p>45 472320.70 326524.16</p> <p>46 472320.70 326524.16</p> <p>47 472320.70 326524.16</p> <p>48 472320.70 326524.16</p> <p>49 472320.70 326524.16</p> <p>50 472320.70 326524.16</p> <p>51 472320.70 326524.16</p> <p>52 472320.70 326524.16</p> <p>53 472320.70 326524.16</p> <p>54 472320.70 326524.16</p> <p>55 472320.70 326524.16</p> <p>56 472320.70 326524.16</p> <p>57 472320.70 326524.16</p> <p>58 472320.70 326524.16</p> <p>59 472320.70 326524.16</p> <p>60 472320.70 326524.16</p> <p>61 472320.70 326524.16</p> <p>62 472320.70 326524.16</p> <p>63 472320.70 326524.16</p> <p>64 472320.70 326524.16</p> <p>65 472320.70 326524.16</p> <p>66 472320.70 326524.16</p> <p>67 472320.70 326524.16</p> <p>68 472320.70 326524.16</p> <p>69 472320.70 326524.16</p> <p>70 472320.70 326524.16</p> <p>71 472320.70 326524.16</p> <p>72 472320.70 326524.16</p> <p>73 472320.70 326524.16</p> <p>74 472320.70 326524.16</p> <p>75 472320.70 326524.16</p> <p>76 472320.70 326524.16</p> <p>77 472320.70 326524.16</p> <p>78 472320.70 326524.16</p> <p>79 472320.70 326524.16</p> <p>80 472320.70 326524.16</p> <p>81 472320.70 326524.16</p> <p>82 472320.70 326524.16</p> <p>83 472320.70 326524.16</p> <p>84 472320.70 326524.16</p> <p>85 472320.70 326524.16</p> <p>86 472320.70 326524.16</p> <p>87 472320.70 326524.16</p> <p>88 472320.70 326524.16</p> <p>89 472320.70 326524.16</p> <p>90 472320.70 326524.16</p> <p>91 472320.70 326524.16</p> <p>92 472320.70 326524.16</p> <p>93 472320.70 326524.16</p> <p>94 472320.70 326524.16</p> <p>95 472320.70 326524.16</p> <p>96 472320.70 326524.16</p> <p>97 472320.70 326524.16</p> <p>98 472320.70 326524.16</p> <p>99 472320.70 326524.16</p> <p>100 472320.70 326524.16</p> <p>101 472320.70 326524.16</p> <p>102 472320.70 326524.16</p> <p>103 472320.70 326524.16</p> <p>104 472320.70 326524.16</p> <p>105 472320.70 326524.16</p> <p>106 472320.70 326524.16</p> <p>107 472320.70 326524.16</p> <p>108 472320.70 326524.16</p> <p>109 472320.70 326524.16</p> <p>110 472320.70 326524.16</p> <p>111 472320.70 326524.16</p> <p>112 472320.70 326524.16</p> <p>113 472320.70 326524.16</p> <p>114 472320.70 326524.16</p> <p>115 472320.70 326524.16</p> <p>116 472320.70 326524.16</p> <p>117 472320.70 326524.16</p> <p>118 472320.70 326524.16</p> <p>119 472320.70 326524.16</p> <p>120 472320.70 326524.16</p> <p>121 472320.70 326524.16</p> <p>122 472320.70 326524.16</p>	<p>Point # Bearing Distance</p> <p>123 472320.70 326524.16</p> <p>124 472320.70 326524.16</p> <p>125 472320.70 326524.16</p> <p>126 472320.70 326524.16</p> <p>127 472320.70 326524.16</p> <p>128 472320.70 326524.16</p> <p>129 472320.70 326524.16</p> <p>130 472320.70 326524.16</p> <p>131 472320.70 326524.16</p> <p>132 472320.70 326524.16</p> <p>133 472320.70 326524.16</p> <p>134 472320.70 326524.16</p> <p>135 472320.70 326524.16</p> <p>136 472320.70 326524.16</p> <p>137 472320.70 326524.16</p> <p>138 472320.70 326524.16</p> <p>139 472320.70 326524.16</p> <p>140 472320.70 326524.16</p> <p>141 472320.70 326524.16</p> <p>142 472320.70 326524.16</p> <p>143 472320.70 326524.16</p> <p>144 472320.70 326524.16</p> <p>145 472320.70 326524.16</p> <p>146 472320.70 326524.16</p> <p>147 472320.70 326524.16</p> <p>148 472320.70 326524.16</p> <p>149 472320.70 326524.16</p> <p>150 472320.70 326524.16</p> <p>151 472320.70 326524.16</p> <p>152 472320.70 326524.16</p> <p>153 472320.70 326524.16</p> <p>154 472320.70 326524.16</p> <p>155 472320.70 326524.16</p> <p>156 472320.70 326524.16</p> <p>157 472320.70 326524.16</p> <p>158 472320.70 326524.16</p> <p>159 472320.70 326524.16</p> <p>160 472320.70 326524.16</p> <p>161 472320.70 326524.16</p> <p>162 472320.70 326524.16</p> <p>163 472320.70 326524.16</p> <p>164 472320.70 326524.16</p> <p>165 472320.70 326524.16</p> <p>166 472320.70 326524.16</p> <p>167 472320.70 326524.16</p> <p>168 472320.70 326524.16</p> <p>169 472320.70 326524.16</p> <p>170 472320.70 326524.16</p> <p>171 472320.70 326524.16</p> <p>172 472320.70 326524.16</p> <p>173 472320.70 326524.16</p> <p>174 472320.70 326524.16</p> <p>175 472320.70 326524.16</p> <p>176 472320.70 326524.16</p> <p>177 472320.70 326524.16</p> <p>178 472320.70 326524.16</p> <p>179 472320.70 326524.16</p> <p>180 472320.70 326524.16</p> <p>181 472320.70 326524.16</p> <p>182 472320.70 326524.16</p> <p>183 472320.70 326524.16</p> <p>184 472320.70 326524.16</p> <p>185 472320.70 326524.16</p> <p>186 472320.70 326524.16</p> <p>187 472320.70 326524.16</p> <p>188 472320.70 326524.16</p> <p>189 472320.70 326524.16</p> <p>190 472320.70 326524.16</p> <p>191 472320.70 326524.16</p> <p>192 472320.70 326524.16</p> <p>193 472320.70 326524.16</p> <p>194 472320.70 326524.16</p> <p>195 472320.70 326524.16</p> <p>196 472320.70 326524.16</p> <p>197 472320.70 326524.16</p> <p>198 472320.70 326524.16</p> <p>199 472320.70 326524.16</p> <p>200 472320.70 326524.16</p>
---	--

LEGEND

○ SET 1/2" JP W/CAP

□ FOUND STONE

⊗ FOUND STONE IN W/ CAP

⊖ FOUND ROD NAIL

CERTIFICATE OF SURVEY

I hereby certify that on OCTOBER 12, 2015, that a survey was made under my supervision of the property described above and that the above plat is a true and correct representation of said survey. I also certify that this plat meets the Oklahoma Minimum Standards for the practice of Land Surveying as adopted by the Oklahoma State Board of Registration for Professional Engineers and Land Surveyors.

T.D. Chappell, Oklahoma Licensed Professional Land Surveyor No. 16173.

SCALE
0" = 300' 0" = 600' 0" = 1200'

NOTE: THIS SURVEY WAS BENEFITED WITHOUT THE COMMENT AND MAY CONTAIN ERRORS OR RIGHTS OF WAY NOT SHOWN