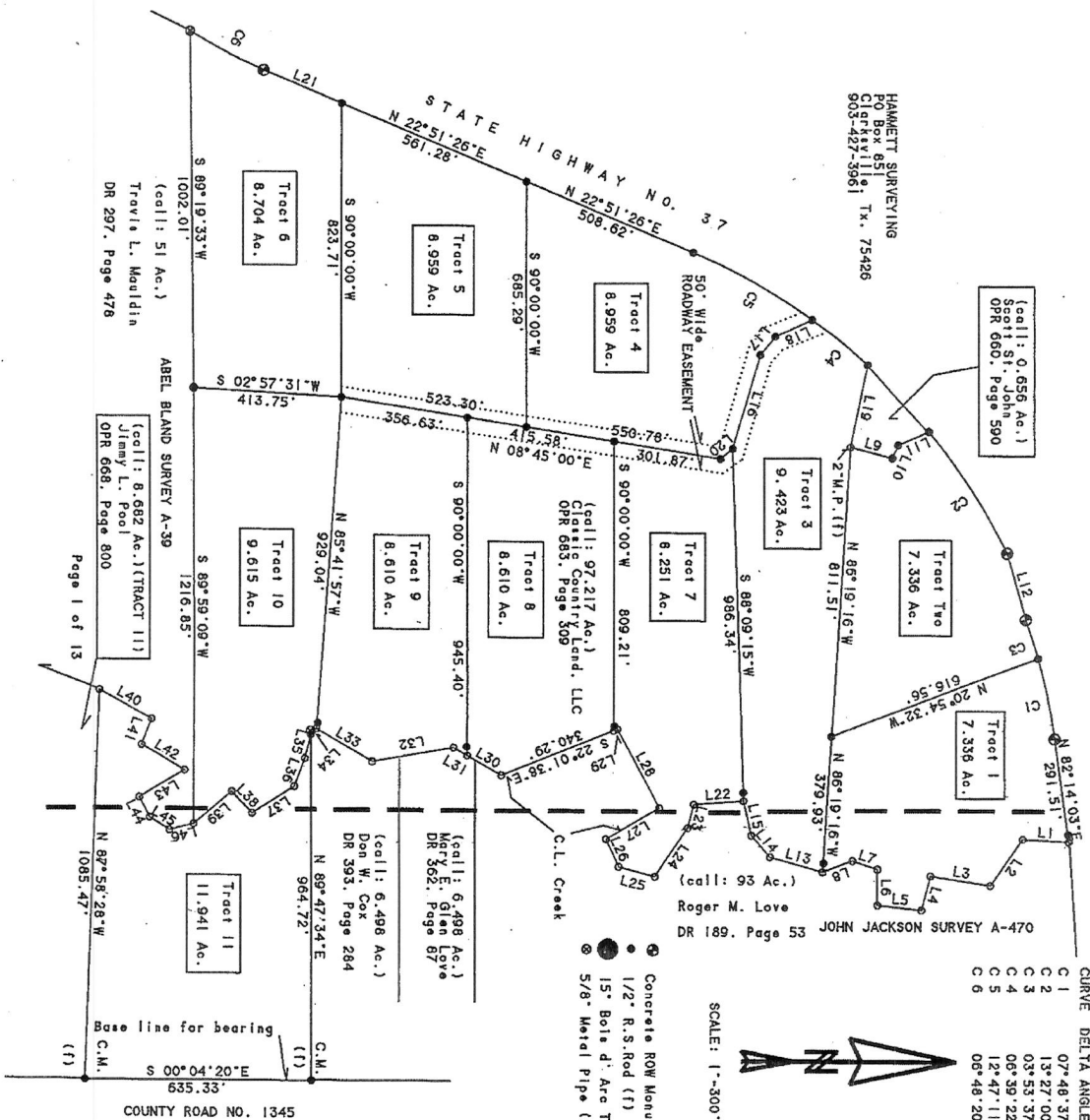


Plot and Field Notes of eleven tracts of land in Red River County, Texas, for Classic Country Land, L.L.C..



HAMMETT SURVEYING
PO Box 851
Casper, TX 75426
75426
903-427-3861

(call: 0,656 Ac.)
OPR 660, Page 390
John L. Love

SCALE: 1"=300'

CURVE	DELTA ANGLE	RADIUS	ARC	TANGENT	CHORD	CHORD BEARING
C 1	07° 48' 37"	1688.18'	230.12'	115.24'	229.94'	N 79° 23' 29" E
C 2	13° 27' 00"	1713.18'	402.16'	202.01'	401.24'	N 57° 11' 20" E
C 3	03° 53' 37"	1688.18'	114.72'	57.36'	114.72'	N 73° 32' 23" E
C 4	06° 39' 22"	1713.18'	199.02'	99.62'	198.91'	N 38° 50' 13" E
C 5	12° 47' 11"	1713.18'	392.32'	191.90'	381.53'	N 29° 06' 56" E
C 6	08° 48' 20"	1960.08'	232.82'	116.55'	232.68'	N 27° 29' 58" E

- Concrete ROW Monument (f)
- 1/2" R.S. Rod (f)
- 15" Bolt d. Arc Tree
- 5/8" Metal Pipe (f)



August 7, 2013
Ryan D. Hammett
Registered Professional Land
Surveyor No. 4745