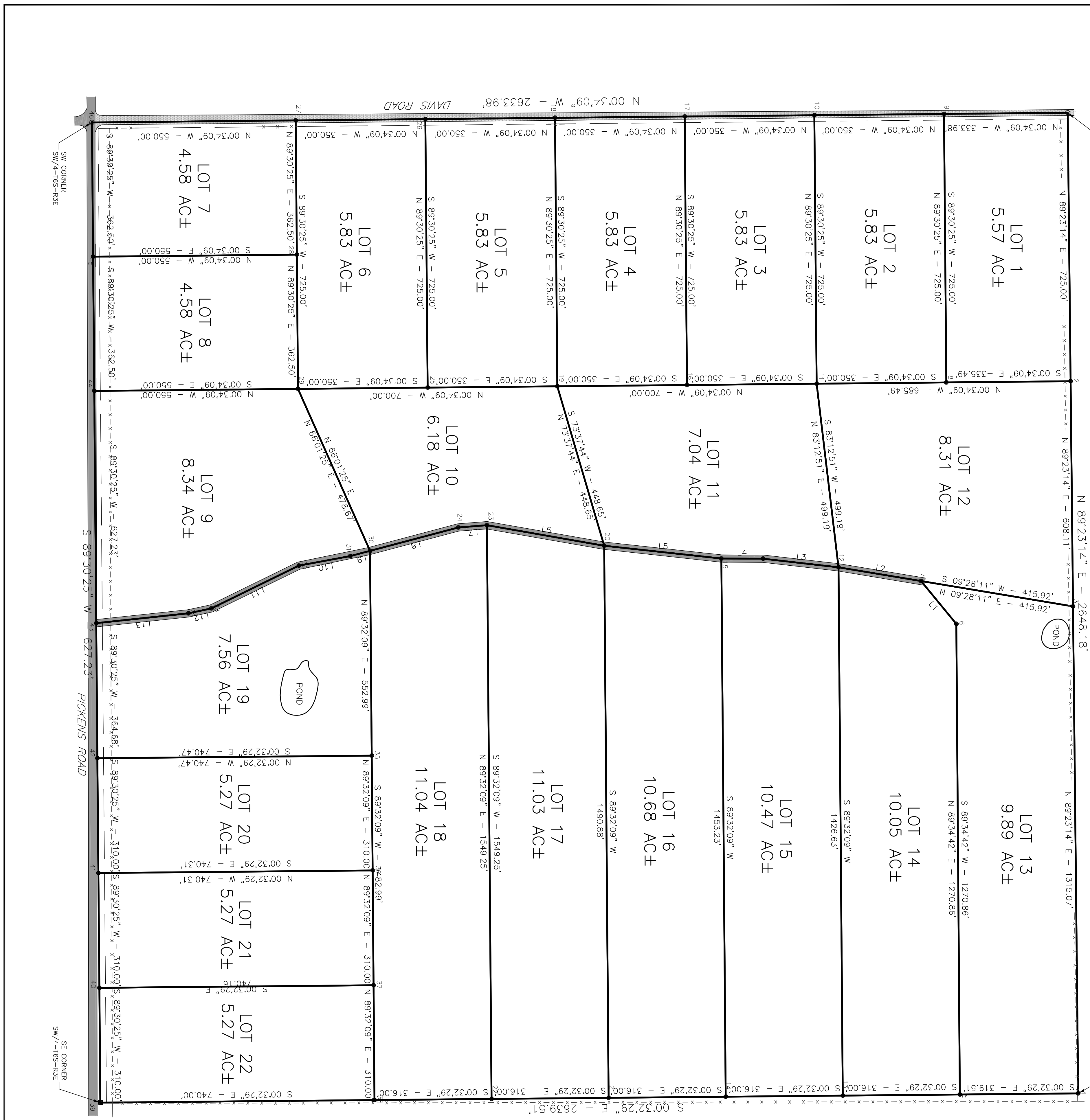


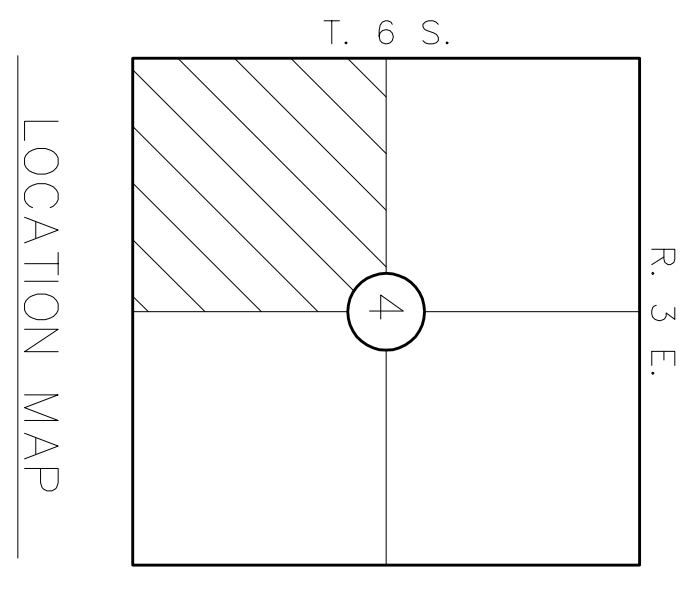
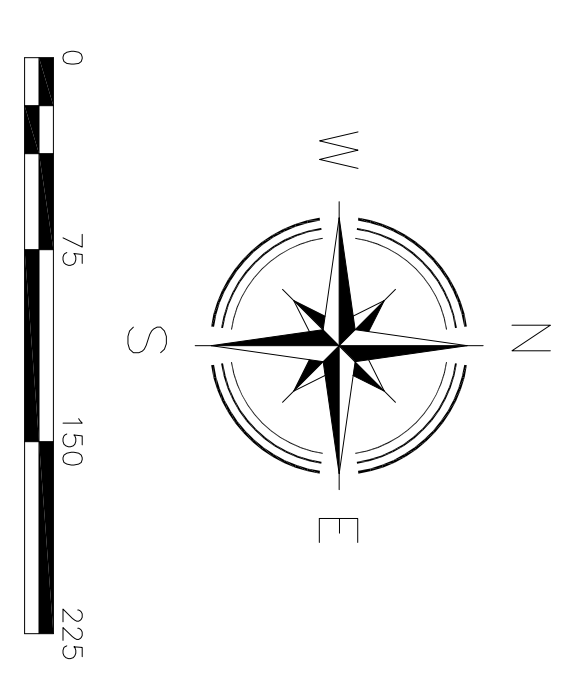
MONTGOMERY RANCH

A Subdivision lying in the SW/4 of
Section 4, Township 6 South, Range 3 East
of the Indian Meridian, Love County, Oklahoma



LINE	BEARING	DISTANCE
L1	N 50°27'12" E	149.93'
L2	S 09°28'11" W	225.81'
L3	N 06°30'20" E	204.78'
L4	N 00°17'49" E	112.75'
L5	S 06°15'45" W	316.18'
L6	S 04°32'42" E	77.657'
L7	S 04°32'42" E	77.657'
L8	N 14°50'40" W	246.24'
L9	S 14°50'40" E	55.51'
L10	S 10°32'18" E	141.18'
L11	N 26°03'53" W	262.52'
L12	S 12°08'19" E	63.57'
L13	N 06°05'53" W	250.07'

Point	Northing	Eastings
1	267330.485	2269947.901
2	267338.239	2270672.860
3	267344.742	2271280.938
4	267358.807	2272593.930
5	267039.959	2274398.949
6	266934.495	2271212.509
7	267002.762	2270676.192
8	266996.525	2269951.218
9	266646.542	2269954.694
10	266652.779	2270679.668
11	266711.762	2271175.357
12	266723.322	2272601.935
13	266407.336	2272604.921
14	266302.810	2271151.735
15	266352.560	2271151.735
16	266502.810	2270682.942
17	266502.810	2270682.942
18	266546.575	2269987.646
19	266592.813	2270686.620
20	266079.267	2271171.079
21	266091.350	2272607.907
22	265775.564	2272610.693
23	265762.810	2271061.698
24	265685.384	2271061.698
25	265602.830	2270690.096
26	265956.592	2269985.122
27	268246.009	2269985.599
28	268246.009	2269985.599
29	268246.009	2269985.599
30	266447.361	2271150.940
31	265254.902	2271145.161
32	265254.902	2271170.982
33	265019.081	2271286.330
34	264969.933	2271298.697
35	265451.842	2271683.909
36	265454.354	2271993.899
37	265496.866	2272303.889
38	265493.378	2272613.879
39	264719.410	2272610.842
40	264719.410	2272610.842
41	264719.410	2272610.842
42	264719.410	2271690.906
43	264708.271	2271326.239
44	264702.874	2273069.035
45	264699.755	2270336.548
46	264696.636	2269974.061



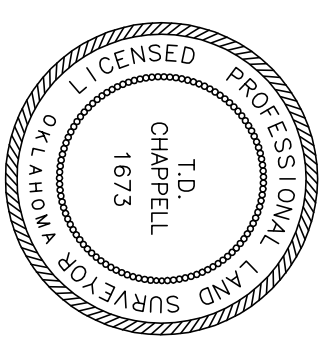
NOTES

This Plat of Survey meets the Oklahoma Minimum Standards for the practice of Land Surveying as adopted by the Oklahoma State Board of Registration for Professional Engineers and Land Surveyors.

CERTIFICATE

We, Chappell Land Surveying, PC, in the State of Oklahoma, do hereby certify that the above shown survey is true and correct to the best of our knowledge.

WITNESS my hand and seal this 15th day of MARCH, 2016.



Registered Professional Surveyor

CHAPPELL
LAND SURVEYING, PC

P.O. BOX 863
HUGO, OK 74743
580-326-6688
cflay@chappellsurveying.com

REVISIONS	BY	DATE	Certificate of Authorization No. 5072, Expires June 30, 2016
PLAT OF SURVEY	Drawn By: JN	Checked By: TC	Proj. No. S005-16
	Date: 3/21/2016	Scale: 1"=150'	Sheet 1 of 2

48 HOURS BEFORE YOU DIG...CALL OKIE
1-800-522-6543
Oklahoma One-Call System, Inc.