

RECORD OF SURVEY

A PORTION OF SEC 05 T14S R31E

BASIS OF BEARINGS:

LINEAR UNIT: INTERNATIONAL FOOT
 GEODETIC DATUM: NORTH AMERICAN DATUM OF 1983 (1992)
 VERTICAL DATUM: NORTH AMERICAN VERTICAL DATUM OF 1988 (SEE BELOW)
 SYSTEM: ARIZONA LDP
 ZONE: COCHISE COUNTY
 PROJECTION: TRANSVERSE MERCATOR
 LATITUDE OF GRID ORIGIN: 31° 19' 00" N
 LONGITUDE OF CENTRAL MERIDIAN: 109° 45' 00" W
 NORTHING AT GRID ORIGIN: 0.000 FT
 EASTING AT CENTRAL MERIDIAN: 240,000,000 FT
 SCALE FACTOR ON CENTRAL MERIDIAN: 1.000195 (EXACT)
 ALL DISTANCES AND BEARINGS SHOWN HEREON ARE GRID VALUES BASED ON THE PRECEDING PROJECTION DEFINITION. THE PROJECTION WAS DEFINED SUCH THAT GRID DISTANCES ARE EQUIVALENT TO "GROUND" DISTANCES IN THE PROJECT AREA.
 THE BASIS OF BEARINGS IS GEODETIC NORTH. NOTE THAT THE GRID BEARINGS SHOWN HEREON (OR IMPLIED BY GRID COORDINATES) DO NOT EQUAL GEODETIC BEARINGS DUE TO MERIDIAN CONVERGENCE. THE SURVEY WAS CONDUCTED USING GPS REFERENCED TO THE NATIONAL SPATIAL REFERENCE SYSTEM. A PARTIAL LIST OF POINT COORDINATES IS GIVEN BELOW (ADDITIONAL COORDINATES ARE AVAILABLE UPON REQUEST). LOCAL NETWORK ACCURACY ESTIMATES ARE GIVEN AT THE 95% CONFIDENCE LEVEL AND ARE BASED ON AN APPROPRIATELY CONSTRAINED LEAST-SQUARES ADJUSTMENT OF OVER-DETERMINED AND STATISTICALLY INDEPENDENT OBSERVATIONS.

STATEMENT:

I HEREBY STATE THIS PLAT REPRESENTS A SURVEY MADE BY ME OR UNDER MY DIRECTION AND THAT THE PROPERTY CORNERS AND SURVEY MONUMENTS EXIST AS SHOWN HEREON.



DAVID L. SUTHERLAND R.L.S. # 30365
 EXPIRES: 9/30/2023

DATE:

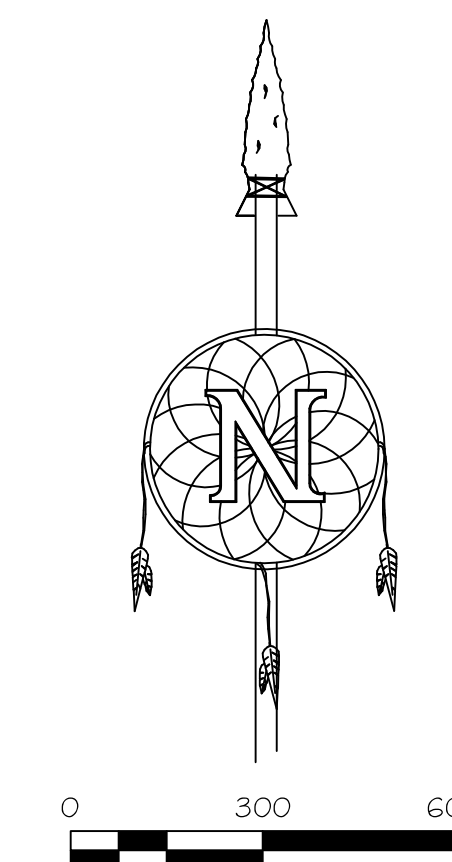
RECORDING DATA:

STATE OF ARIZONA }
 COUNTY OF COCHISE } SS

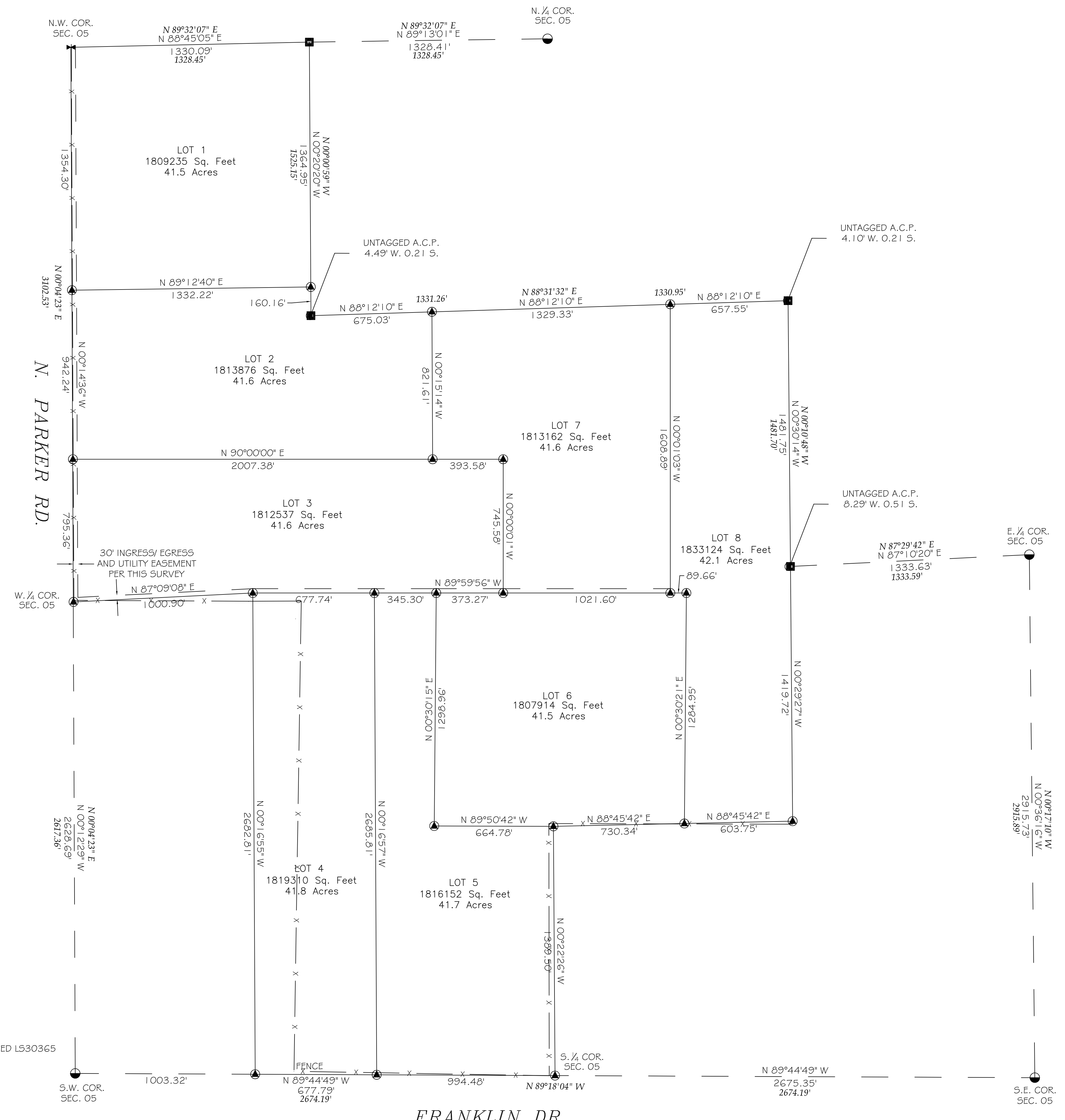
FILED FOR RECORD AT THE REQUEST OF SUTHERLANDSURVEY, LLC.
 ON THIS _____ DAY OF _____ 20____
 IN BOOK _____ OF MAPS OF SURVEYS AT PAGE _____ THEREOF,
 FEE NO. _____

WITNESS MY HAND AND OFFICIAL SEAL THE DAY AND YEAR ABOVE WRITTEN.

COCHISE COUNTY RECORDER/DEPUTY COUNTY RECORDER



BOOK _____ PAGE _____



N 89°55'41" W = MEASURED
 75.65'
 N 89°43'47" E = ROS B49 P60
 1353.41'
 X = FND B.L.M. MONUMENT
 O = FND A.C.P. NO TAG
 T = FND IP TAGGED L516116
 S = SET 1/2" IP W/ 2" A.C. TAGGED L530365
 ● = FND G.L.O. MONUMENT

REFERENCE DOCUMENTS
 Bk06 Pg79, Bk41 Pg94,
 Bk51 Pg06

5149 S Calle Alamo Sierra Vista AZ 85650

JOB# 22-128	DATE: 13 JULY 2022	APPROVED BY:
		SCALE: 1"=300' DESIGN: LT, SPLIT DRAWN: RDH CHECKED: DLS DATE:
Dave Sutherland LS30365 Cell: (520) 249-6103 Email: rls30365@gmail.com		