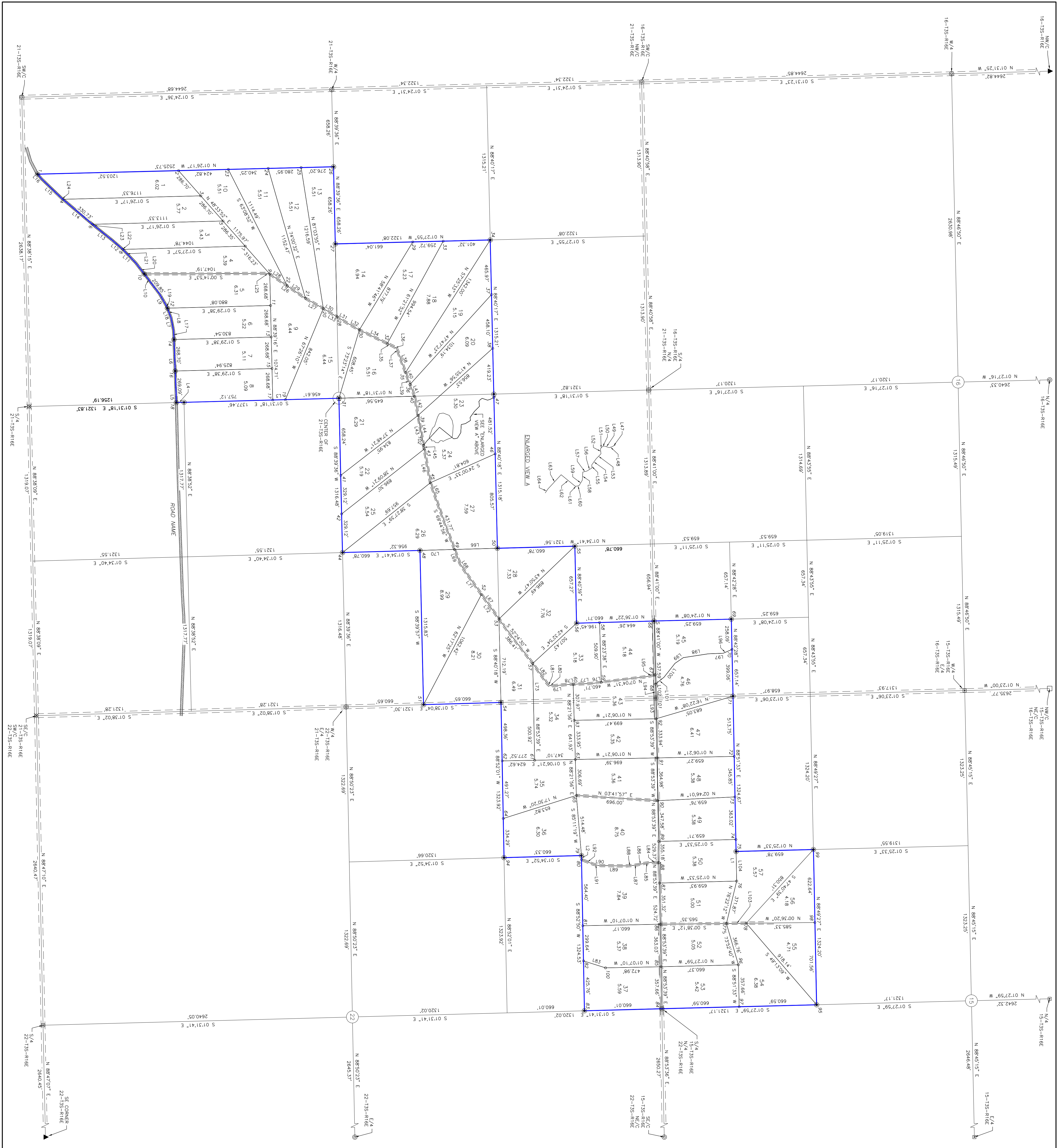
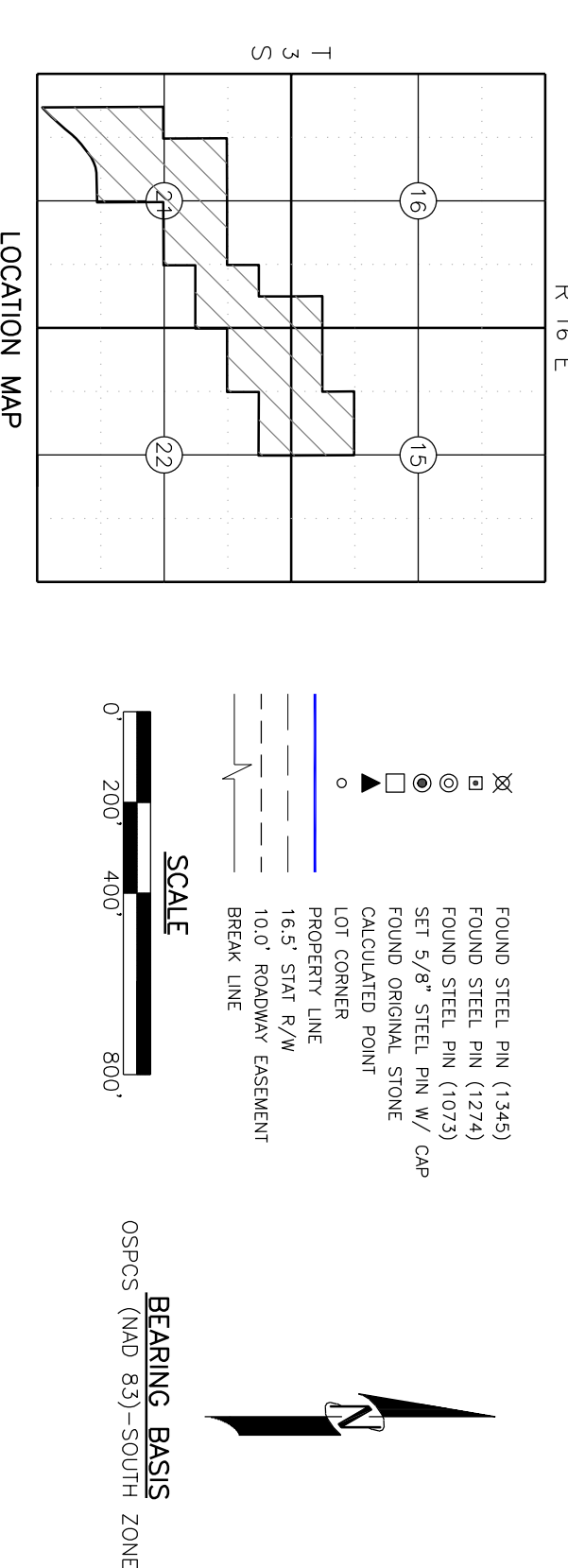


PAINTED HORSE



Line #	Bearing	Distance	Point #	Northing	Easting	Point #	Northing	Easting
L1	S 88°43'55" E	1316.69	1	50983.4407	2679346.8298	61	51326.4198	2684348.1332
L2	S 88°43'55" E	657.34	2	51066.6540	2679319.6276	62	51336.7277	2684353.4897
L3	S 88°43'55" E	657.34	3	51151.0111	2679244.2841	63	51346.9964	2684358.7452
L4	S 88°43'55" E	657.34	4	51235.3612	2679168.9396	64	51357.2651	2684363.9997
L5	S 88°43'55" E	657.34	5	51319.7113	2679093.5951	65	51367.5338	2684369.2542
L6	S 88°43'55" E	657.34	6	51404.0614	2679018.2506	66	51377.8025	2684374.5087
L7	S 88°43'55" E	657.34	7	51488.4115	2678942.9061	67	51388.0712	2684380.0632
L8	S 88°43'55" E	657.34	8	51572.7616	2678867.5616	68	51398.3399	2684385.3177
L9	S 88°43'55" E	657.34	9	51657.1117	2678792.2171	69	51408.6086	2684389.5722
L10	S 88°43'55" E	657.34	10	51741.4618	2678716.8726	70	51418.8773	2684394.8267
L11	S 88°43'55" E	657.34	11	51825.8119	2678641.5281	71	51429.1460	2684399.0812
L12	S 88°43'55" E	657.34	12	51910.1620	2678566.1836	72	51439.4147	2684403.3357
L13	S 88°43'55" E	657.34	13	51994.5121	2678490.8391	73	51449.6834	2684407.5902
L14	S 88°43'55" E	657.34	14	52078.8622	2678415.4946	74	51459.9521	2684411.8447
L15	S 88°43'55" E	657.34	15	52163.2123	2678340.1501	75	51470.2208	2684416.0992
L16	S 88°43'55" E	657.34	16	52247.5624	2678264.8056	76	51480.4895	2684420.3537
L17	S 88°43'55" E	657.34	17	52331.9125	2678189.4611	77	51490.7582	2684424.6082
L18	S 88°43'55" E	657.34	18	52416.2626	2678114.1166	78	51501.0269	2684428.8627
L19	S 88°43'55" E	657.34	19	52500.6127	2678038.7721	79	51511.2956	2684433.1172
L20	S 88°43'55" E	657.34	20	52584.9628	2677963.4276	80	51521.5643	2684437.3717
L21	S 88°43'55" E	657.34	21	52669.3129	2677888.0831	81	51531.8330	2684438.6262
L22	S 88°43'55" E	657.34	22	52753.6630	2677812.7386	82	51542.1017	2684439.8807
L23	S 88°43'55" E	657.34	23	52838.0131	2677737.3941	83	51552.3704	2684441.1352
L24	S 88°43'55" E	657.34	24	52922.3632	2677662.0496	84	51562.6391	2684442.3897
L25	S 88°43'55" E	657.34	25	53006.7133	2677586.7051	85	51572.9078	2684443.6442
L26	S 88°43'55" E	657.34	26	53091.0634	2677511.3606	86	51583.1765	2684444.8987
L27	S 88°43'55" E	657.34	27	53175.4135	2677436.0161	87	51593.4452	2684446.1532
L28	S 88°43'55" E	657.34	28	53259.7636	2677360.6716	88	51603.7139	2684447.4077
L29	S 88°43'55" E	657.34	29	53344.1137	2677285.3271	89	51613.9826	2684448.6622
L30	S 88°43'55" E	657.34	30	53428.4638	2677209.9826	90	51624.2513	2684449.9167
L31	S 88°43'55" E	657.34	31	53512.8139	2677134.6381	91	51634.5200	2684451.1712
L32	S 88°43'55" E	657.34	32	53597.1640	2677059.2936	92	51644.7887	2684452.4257
L33	S 88°43'55" E	657.34	33	53681.5141	2676983.9491	93	51655.0574	2684453.6802
L34	S 88°43'55" E	657.34	34	53765.8642	2676908.6046	94	51665.3261	2684454.9347
L35	S 88°43'55" E	657.34	35	53850.2143	2676833.2601	95	51675.5948	2684456.1892
L36	S 88°43'55" E	657.34	36	53934.5644	2676757.9156	96	51685.8635	2684457.4437
L37	S 88°43'55" E	657.34	37	54018.9145	2676682.5711	97	51696.1322	2684458.6982
L38	S 88°43'55" E	657.34	38	54103.2646	2676607.2266	98	51706.4009	2684460.0027
L39	S 88°43'55" E	657.34	39	54187.6147	2676531.8821	99	51716.6696	2684461.3072
L40	S 88°43'55" E	657.34	40	54271.9648	2676456.5376	100	51726.9383	2684462.6117
L41	S 88°43'55" E	657.34	41	54356.3149	2676381.1931	101	51737.2070	2684463.9162
L42	S 88°43'55" E	657.34	42	54440.6650	2676305.8486	102	51747.4757	2684465.2207
L43	S 88°43'55" E	657.34	43	54525.0151	2676230.5041			
L44	S 88°43'55" E	657.34	44	54609.3652	2676155.1596			
L45	S 88°43'55" E	657.34	45	54693.7153	2676080.8151			
L46	S 88°43'55" E	657.34	46	54778.0654	2676005.4706			
L47	S 88°43'55" E	657.34	47	54862.4155	2675930.1261			
L48	S 88°43'55" E	657.34	48	54946.7656	2675854.7816			
L49	S 88°43'55" E	657.34	49	55031.1157	2675779.4371			
L50	S 88°43'55" E	657.34	50	55115.4658	2675704.0926			
L51	S 88°43'55" E	657.34	51	55200.8159	2675628.7481			
L52	S 88°43'55" E	657.34	52	55285.1660	2675553.4036			
L53	S 88°43'55" E	657.34	53	55369.5161	2675478.0591			
L54	S 88°43'55" E	657.34	54	55453.8662	2675402.7146			
L55	S 88°43'55" E	657.34	55	55538.2163	2675327.3701			
L56	S 88°43'55" E	657.34	56	55622.5664	2675252.0256			
L57	S 88°43'55" E	657.34	57	55706.9165	2675176.6811			
L58	S 88°43'55" E	657.34	58	55791.2666	2675101.3366			
L59	S 88°43'55" E	657.34	59	55875.6167	2675025.9921			
L60	S 88°43'55" E	657.34	60	55960.0000	2674950.6476			



CERTIFICATE OF SURVEY
 I hereby certify that on January 12, 2021, that a survey was made under my supervision of the property described above and that the above plot is a true and correct representation of said survey. I also certify that this plot meets the Oklahoma Minimum Standards for the practice of Land Surveying as adopted by the Oklahoma State Board of Licensed Professional Land Surveyors.

CHAPPELL LAND SURVEYING, P.C.
 16.5 STAR R/W
 100' BROADWAY EGRESSMENT
 OKLAHOMA CITY, OKLAHOMA 73102

APPROVED BY: [Signature] TC

DRAWN BY: JA

SURV. BY: TC

DATE: 01/12/21

SHEET #: 1 OF 1