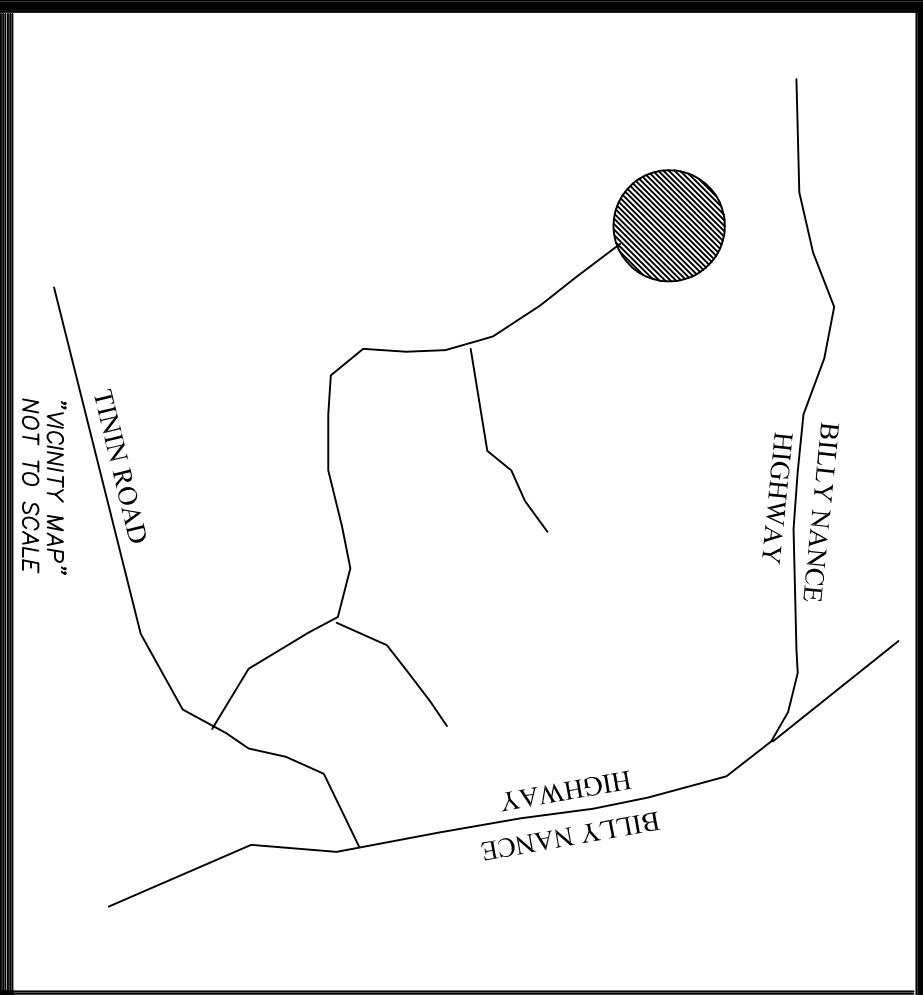


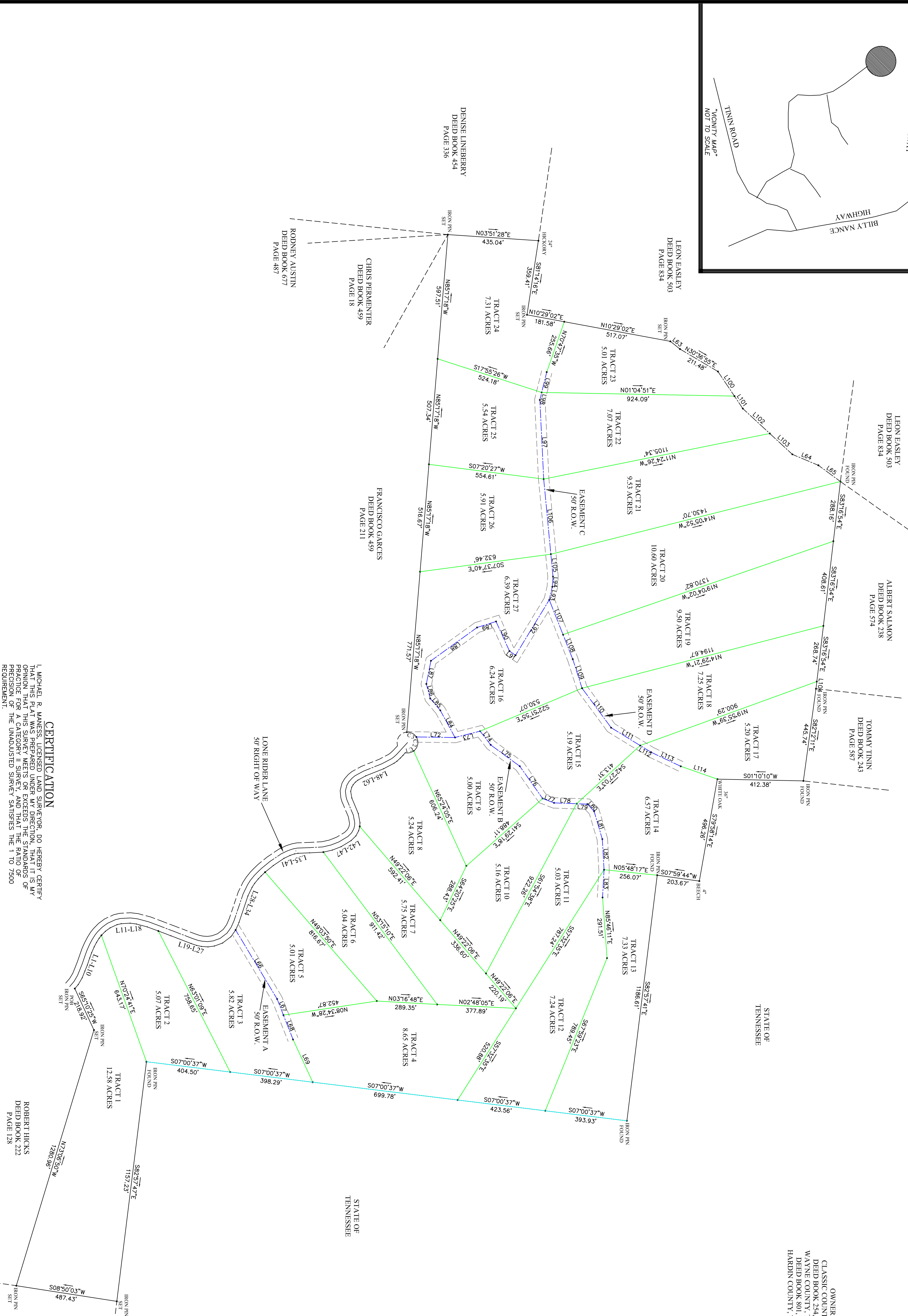
REDEMPTION RIDGE



OWNER:
 CLASSIC COUNTRY LAND
 DEED BOOK 244, PAGE 87
 WAYNE COUNTY, TENNESSEE
 HARDIN COUNTY, TENNESSEE

IRON PIN SET AT ALL PROPERTY CORNERS WITH 1/2" INCH REBAR STAMPED "R.L.S. #2127" ORANGE PLASTIC CAP

250
 125 0 250



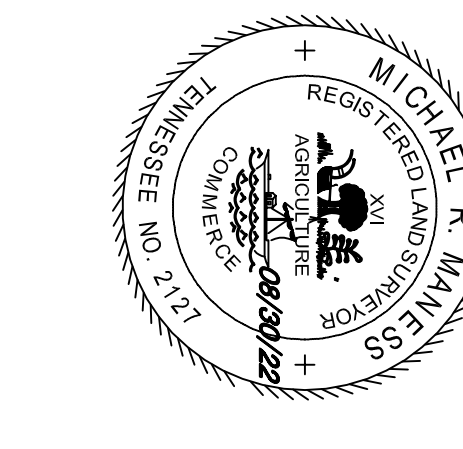
LINE	LENGTH	BEARING
L1	582.9	N89°11'14\"
L2	37.61	N59°37'55\"
L3	50.16	N88°07'15\"
L4	50.16	N88°07'15\"
L5	50.16	N88°07'15\"
L6	27.57	N79°27'28\"
L7	50.16	N71°07'31\"
L8	50.16	N71°07'31\"
L9	23.66	N57°24'27\"
L10	17.29	N59°55'25\"
L11	17.29	N59°55'25\"
L12	27.66	N65°15'28\"
L13	38.95	N64°37'01\"
L14	24.26	N57°57'45\"
L15	30.33	N67°13'37\"
L16	59.46	N44°37'19\"
L17	59.46	N44°37'19\"
L18	20.06	N60°55'11\"
L19	64.30	N60°55'11\"
L20	48.95	N37°15'40\"
L21	30.75	N67°55'34\"
L22	30.75	N67°55'34\"
L23	31.14	N67°55'34\"
L24	21.4	N67°55'34\"
L25	20.06	N67°55'34\"
L26	20.06	N67°55'34\"
L27	20.06	N67°55'34\"
L28	20.06	N67°55'34\"
L29	20.06	N67°55'34\"
L30	20.06	N67°55'34\"
L31	20.06	N67°55'34\"
L32	20.06	N67°55'34\"
L33	20.06	N67°55'34\"
L34	20.06	N67°55'34\"
L35	20.06	N67°55'34\"
L36	20.06	N67°55'34\"
L37	20.06	N67°55'34\"
L38	20.06	N67°55'34\"
L39	20.06	N67°55'34\"
L40	20.06	N67°55'34\"
L41	20.06	N67°55'34\"
L42	20.06	N67°55'34\"
L43	20.06	N67°55'34\"
L44	20.06	N67°55'34\"
L45	20.06	N67°55'34\"
L46	20.06	N67°55'34\"
L47	20.06	N67°55'34\"
L48	20.06	N67°55'34\"
L49	20.06	N67°55'34\"
L50	20.06	N67°55'34\"
L51	20.06	N67°55'34\"
L52	20.06	N67°55'34\"
L53	20.06	N67°55'34\"
L54	20.06	N67°55'34\"
L55	20.06	N67°55'34\"
L56	20.06	N67°55'34\"
L57	20.06	N67°55'34\"
L58	20.06	N67°55'34\"
L59	20.06	N67°55'34\"
L60	20.06	N67°55'34\"
L61	20.06	N67°55'34\"
L62	20.06	N67°55'34\"
L63	20.06	N67°55'34\"
L64	20.06	N67°55'34\"
L65	20.06	N67°55'34\"
L66	20.06	N67°55'34\"
L67	20.06	N67°55'34\"
L68	20.06	N67°55'34\"
L69	20.06	N67°55'34\"
L70	20.06	N67°55'34\"
L71	20.06	N67°55'34\"
L72	20.06	N67°55'34\"
L73	20.06	N67°55'34\"
L74	20.06	N67°55'34\"
L75	20.06	N67°55'34\"
L76	20.06	N67°55'34\"
L77	20.06	N67°55'34\"
L78	20.06	N67°55'34\"
L79	20.06	N67°55'34\"
L80	20.06	N67°55'34\"
L81	20.06	N67°55'34\"
L82	20.06	N67°55'34\"
L83	20.06	N67°55'34\"
L84	20.06	N67°55'34\"
L85	20.06	N67°55'34\"
L86	20.06	N67°55'34\"
L87	20.06	N67°55'34\"
L88	20.06	N67°55'34\"
L89	20.06	N67°55'34\"
L90	20.06	N67°55'34\"
L91	20.06	N67°55'34\"
L92	20.06	N67°55'34\"
L93	20.06	N67°55'34\"
L94	20.06	N67°55'34\"
L95	20.06	N67°55'34\"
L96	20.06	N67°55'34\"
L97	20.06	N67°55'34\"
L98	20.06	N67°55'34\"
L99	20.06	N67°55'34\"
L100	20.06	N67°55'34\"

- NOTES**
- 1) IRON PINS SET ON ALL CORNERS UNLESS NOTED OTHERWISE.
 - 2) THIS SURVEY WAS PERFORMED WITHOUT THE BENEFIT OF A TITLE INSURANCE POLICY. THE SURVEYOR HAS CONDUCTED A VISUAL INSPECTION OF THE RECORDS OF THE COUNTY CLERK AND HAS SPECIFICALLY STATED ON THIS PLAT, THIS SURVEY DOES NOT REFLECT ANY OF THE FOLLOWING WHICH MAY BE MORE RECENT RECORDS:
 - a) EASEMENTS, RIGHTS OF WAY, OR OTHER INTERESTS THAT WERE VERBALLY MADE AT THE TIME OF THE MAKING OF THIS SURVEY.
 - b) EASEMENTS, RIGHTS OF WAY, OR OTHER INTERESTS THAT WERE VERBALLY MADE BY ANY OTHER PARTIES.
 - c) EASEMENTS, RIGHTS OF WAY, OR OTHER INTERESTS THAT WERE VERBALLY MADE BY ANY OTHER PARTIES.
 - 3) THIS SURVEY MEETS THE STANDARDS OF PRACTICE FOR A PROPERTY BOUNDARY SURVEY AND IS VALID ONLY IF THIS PRINT HAS THE SIGNATURE AND SEAL OF THE SURVEYOR.
 - 4) DECLAIMATION IS MADE TO THE NEW PURCHASER AND/OR EXISTING LAND OWNER OF THIS TRACT AND THEIR LENDING INSTITUTION IT IS NOT TO BE CONSIDERED TO ANY ADJUDICATED INSTITUTION OR SUBSEQUENT OWNER.

CERTIFICATION

I, MICHAEL R. MANESS, LICENSED LAND SURVEYOR, DO HEREBY CERTIFY THAT THIS PLAT WAS PREPARED UNDER MY DIRECTION, THAT IT IS MY OWN WORK, AND THAT I AM A MEMBER IN GOOD STANDING OF THE PROFESSION OF LAND SURVEYORS IN THE STATE OF TENNESSEE. THE PRECISION OF THE UNADJUSTED SURVEY SATISFIES THE 1 TO 7500 REQUIREMENT.

MICHAEL R. MANESS
 TN REG. NO. 2127



CURVE TABLE

CURVE	LENGTH	RADIUS	CD	DIST.	CD	BEAR.
C1	48.12	50.00	68.25	N79°08'37\"	N79°08'37\"	N79°08'37\"
C2	75.11	50.00	68.25	N79°08'37\"	N79°08'37\"	N79°08'37\"
C3	53.99	50.00	50.06	S77°04'41\"	S77°04'41\"	S77°04'41\"

CLASSIC COUNTRY LAND
 FIRST CIVIL DISTRICT
 HARDIN COUNTY, TENNESSEE
 SECOND CIVIL DISTRICT
 WAYNE COUNTY, TENNESSEE

ALS

ADVANCED LAND SURVEYING, INC.
 2000 WILSON SCHOOL ROAD HENDERSON, TN. 38340
 PHONE (731) 983-0509
 FAX (731) 983-0553

REVISIONS:

DATE: 8-30-22
 SCALE: 1"=250'
 JOB NUMBER:
 FILENAME: 91-50-1
 DRAWING NUMBER: 288.22